



# Accessible Multimodal Editions: Rewriting the Cultural Heritage Framework for the Age of (Digital) Ecosystems

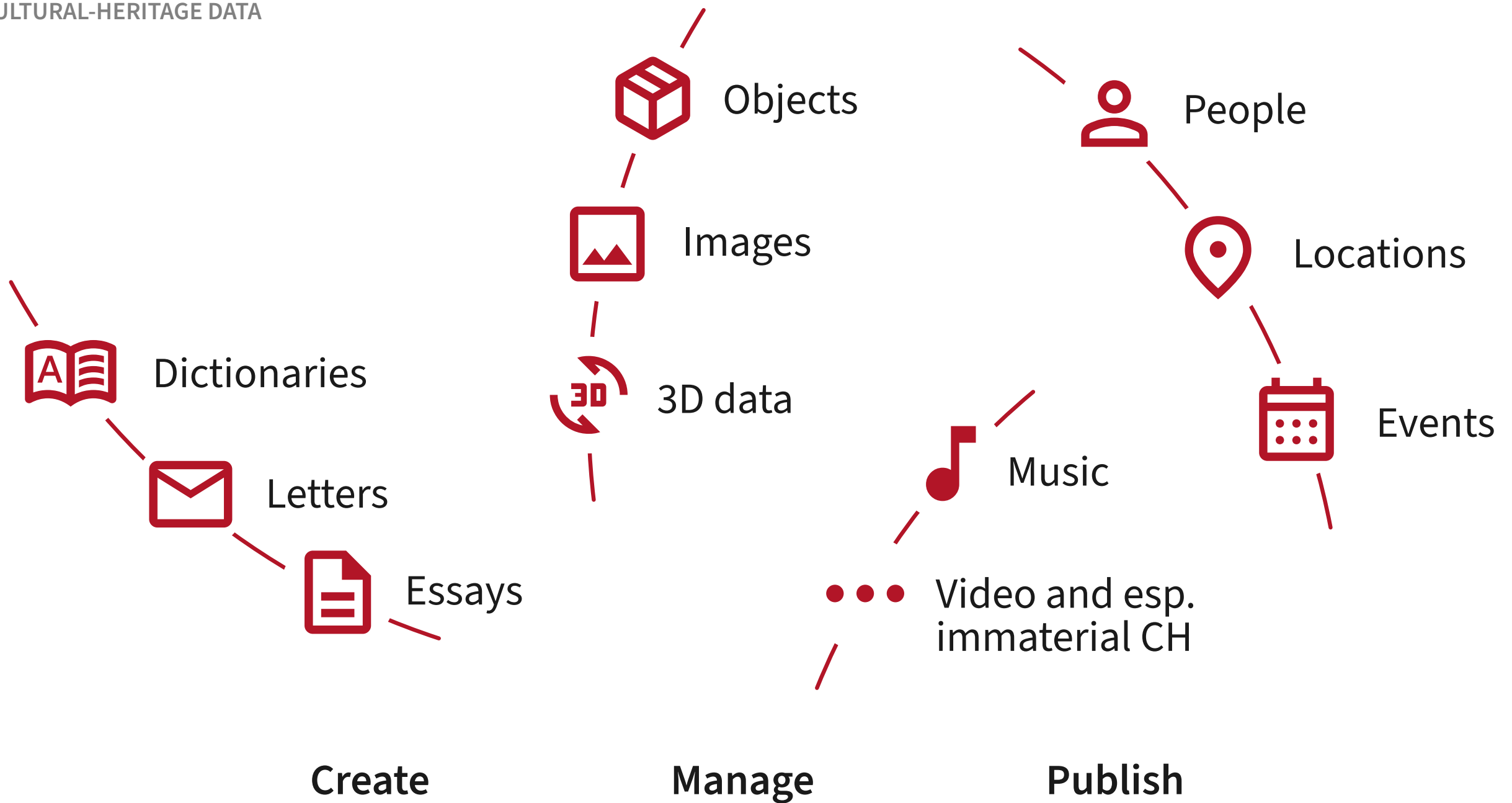


DIGITAL ACADEMY

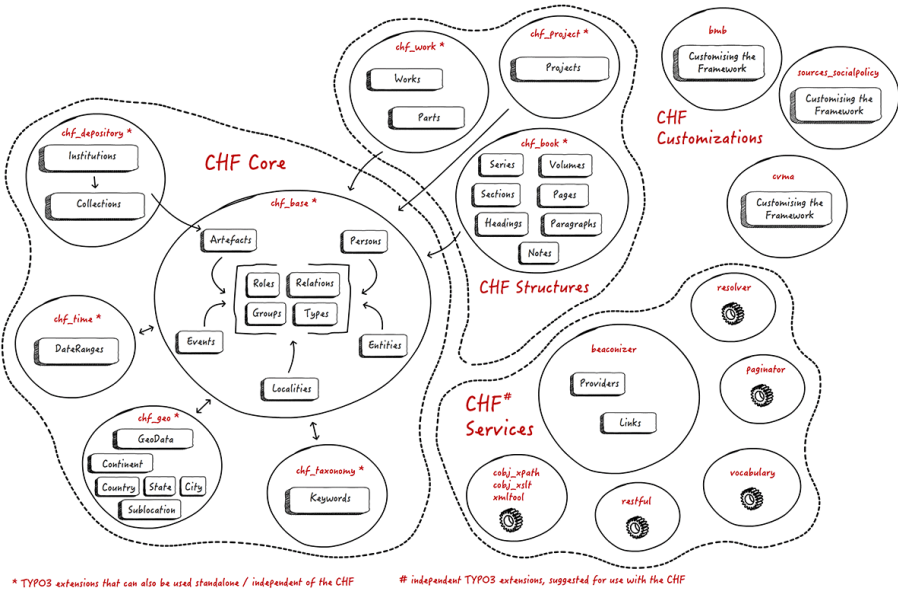
ACADEMY OF SCIENCES AND LITERATURE MAINZ

JONATAN JALLE STELLER

6 MARCH 2024, CC BY 4.0



OPEN-SOURCE SOLUTIONS



\* TYPO3 extensions that can also be used standalone / independent of the CHF  
# independent TYPO3 extensions, suggested for use with the CHF

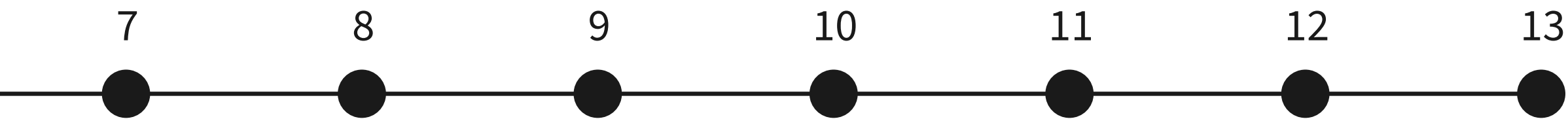
2017 CHF concept by Torsten Schrade



TEI Publisher



PREVIOUS ISSUES



● Most sites, but with residue of code from previous versions

● ● ● ● Most recent site upgrade


● ● ● ● ● Prominent component

● ● ● Multiple incompatible versions

● ● Heavily patched third-party component

Breakage 😞

Overwhelmed staff 😞



Media ecology tries to find out what roles media force us to play, how media structure what we are seeing or thinking, and why media make us feel and act as we do. [...] Ecology is the scientific study on organisms and their interactions with the environment. In this context, an ecological approach focuses on the distributions, abundances, and relations between organic and nonorganic beings in an ecosystem.

Carlos A. Scolari. “Media Ecology: Exploring the Metaphor to Expand the Theory.” *Communication Theory*, vol. 22, no. 2, 2012, pp. 204–225, DOI: 10.1111/j.1468-2885.2012.01404.x.

- User stories ▶ Desires of communities?
- Mapping a domain ▶ Generic models and formats?
- Ubiquitous language ▶ Existing ontologies?
- Component reuse ▶ Components removable?
- Bounded contexts ▶ Resilient data flow?

And how these may change!

## (DIGITAL) ECOSYSTEMS

As few physical servers as possible  
Limited data duplication  
Energy-preserving frontend

### Environment

Semantic annotation  
Screenreader-ready frontend  
No vendor lock-ins

### Accessibility

In-text glossaries  
Responsive design  
Multiple paths into the data

### Interested public

Include XML-based serialisation like TEI  
Options to download all data  
Standardised data models if possible

### Domain-specific communities

Atomic design  
Machine-readable metadata  
Serialisations, APIs, LOD

### Web and digital humanities infrastructure

Data licences  
Privacy  
Limited telemetry

### International legal frameworks

Maintainable for newbies  
Simple code beats elegant code  
Documentation & education

### German academia

Stay up to date  
Act in good faith & contribute  
Engage with the community

### Software stack

Compatible to DoS protection  
Download availability  
Containerisation

### Bad-faith actors

The diagram illustrates an extensible design architecture. At the center is a light purple circle containing the text 'TYPO3 with Cultural Heritage Framework'. An arrow points from the text 'Optional automated ingest routines' to the right side of this central circle. Below the central circle is a horizontal row of seven text elements: 'Data models', 'Editing', 'Serialisations', 'User interface', 'Embedded metadata', 'Search', and 'Social'. Below this row is the text 'Project-specific overwrites'. At the bottom of the diagram are three text elements: 'Optional LOD APIs', 'Optional QA routines', and 'Optional visualisations'. The entire diagram is set against a background of overlapping light purple and grey shapes.

TYPO3 with  
Cultural Heritage  
Framework

Optional automated  
ingest routines

Data models   Editing   Serialisations   User interface   Embedded metadata   Search   Social

Project-specific overwrites

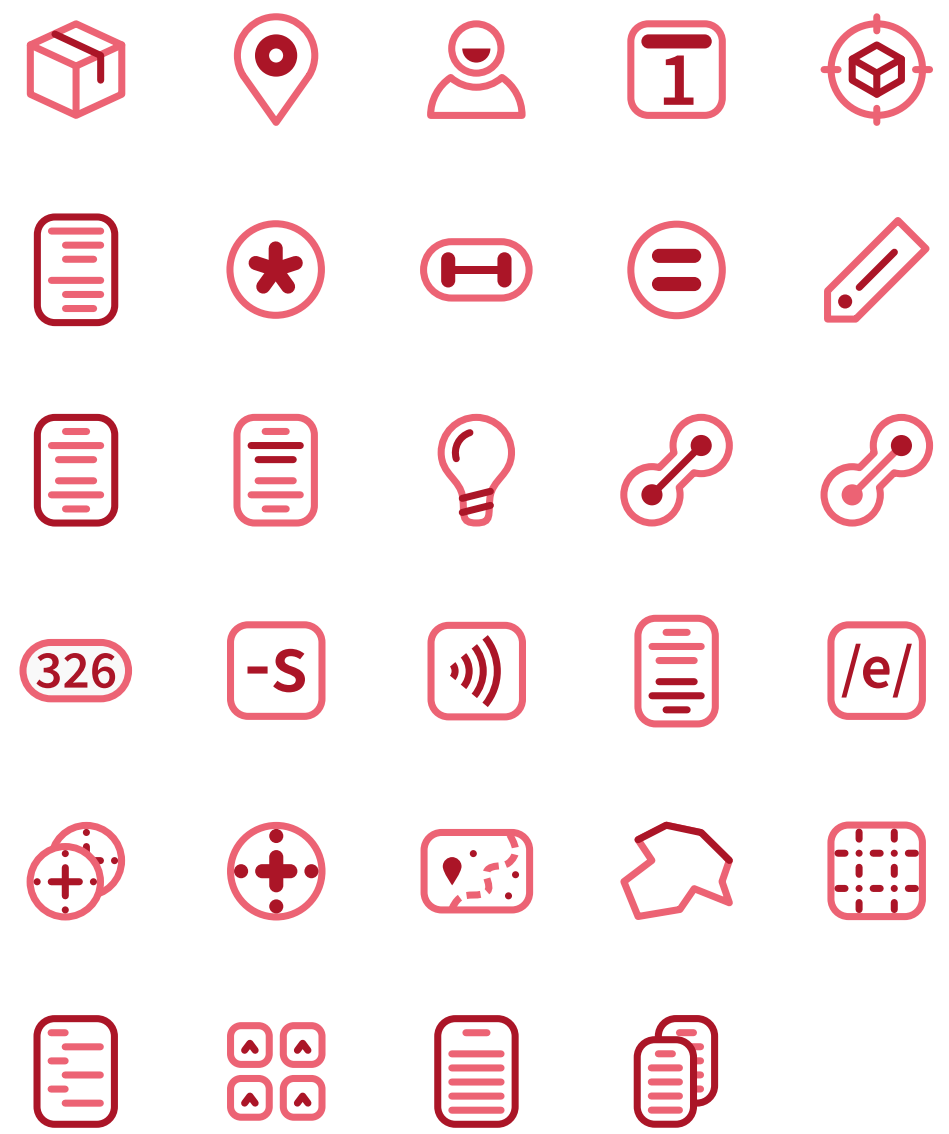
Optional LOD APIs   Optional QA routines   Optional visualisations



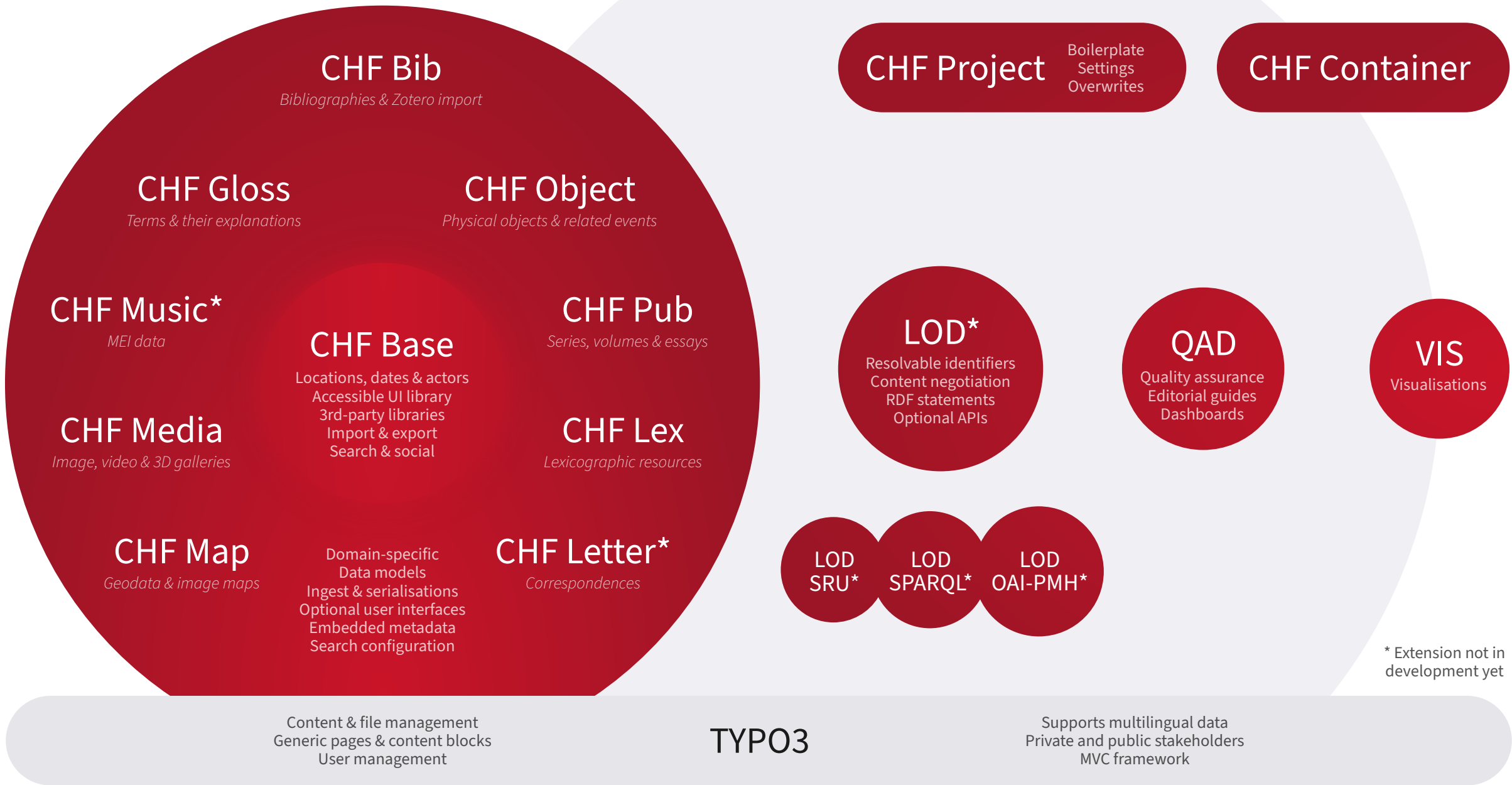
TYPO3 EXTENSIONS

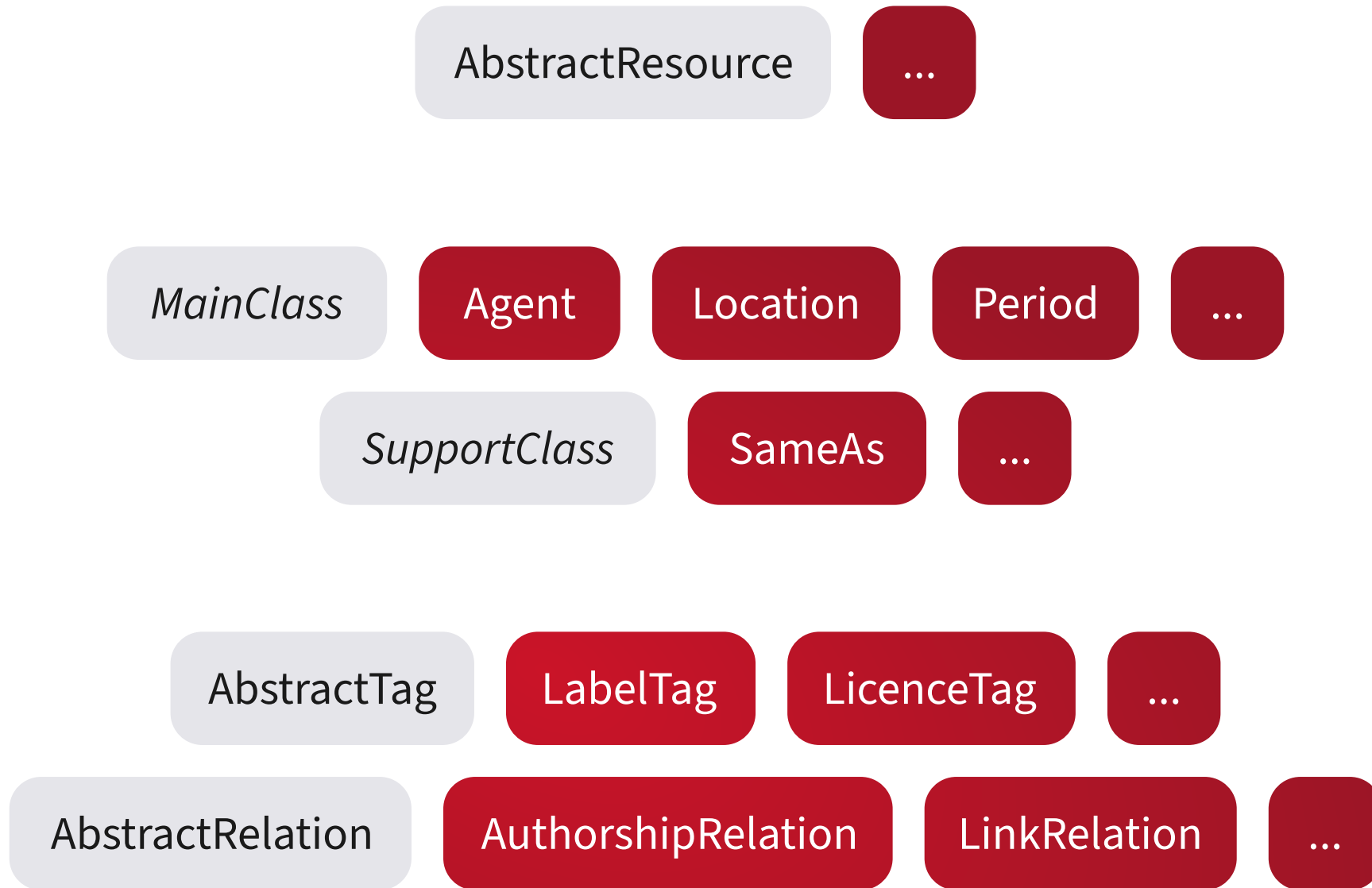


DATABASE TABLES



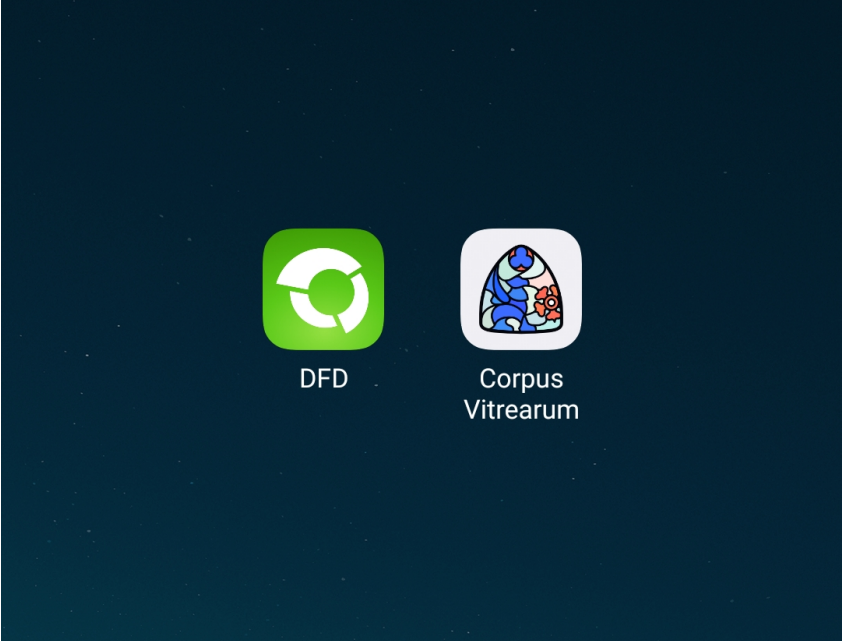
COMPONENTS







ACCESSIBLE FRONT- AND BACKEND



← Zurück

Verkündigung an Maria

Merkliste

Herunterladen

**Gattung** Glasmalerei

**Herstellung** vor 1362

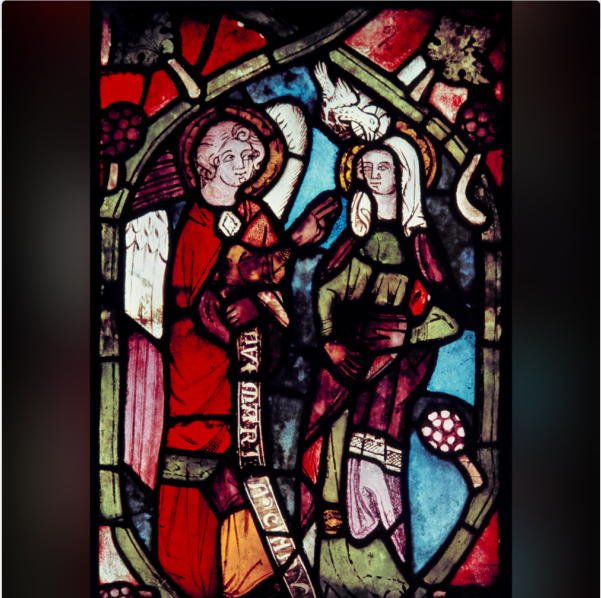
**Standort** Dom Hl. Stephanus u. Sixtus  
Halberstadt, Sachsen-Anhalt, Deutschland

**Fenster** Marienkapelle, I, 1b

**Objektmaß** 39,7 cm × 60,7 cm

**Aufnahme** Digitalisiert von einem Filmpositiv  
Durchlicht Vorderseite  
Einzelaufnahme  
In situ

**Datum** 12. Dezember 1994



**Ikonografie** Weinrebe  
471422

**Ikonografie** Die Wurzel Jesse  
Ein genealogischer Baum, der aus Jesses Lenden sprießt und die Vorfahren Christi zeigt (+ Variante)  
73A2(+0)

**Ikonografie** Die Verkündigung  
Maria steht  
73A521

Ahn Bauernhof Baum  
belauschen Berufe besuchen  
Bibel Christus Eltern Erzengel  
Frucht Gabriel Geburt  
Gesellschaft Gewerbe Handwerk  
Industrie Jesse (Wurzel) Kultur  
Lenden lesen Lukas 01  
Maria (Jungfr... Neues Testa...  
Obet Pflege Stammbaum

Portal für Namenforschung 13.0.1

Suchbegriff eingeben

German

Pfad: /Digitales Familiennamenwörterbuch Deutschlands/ Im Wörterbuch stöbern [3]

Schließen Speichern Anzeigen Löschen

Seite "Im Wörterbuch stöbern" bearbeiten

Allgemein SEO Soziale Medien Metadaten Erscheinungsbild Verhalten Ressourcen Sprache Zugriff

Kategorien Hinweise

**Seite**

**Typ** [doktype]  
Standard [1]

**Titel**

**Seitentitel** [title]  
Im Wörterbuch stöbern

**URL-Segment** [slug]  
http://namenforschung.internal:8080 /dfd/dictionary

**Alternativer Navigationstitel** [nav\_title]  
Wörterbuch

**Untertitel** [subtitle]

Seite [3] [pages]

Research software suite for the production  
and publication of humanities data,  
built with ❤️ by @digicademy in Mainz



[github.com/digicademy-chf](https://github.com/digicademy-chf)  
[jonatan.steller@adwmainz.de](mailto:jonatan.steller@adwmainz.de)  
[@jalle@mozilla.social](https://jalle@mozilla.social)

WIP

CHF2 designed to be useful for various types of cultural-heritage data

Combines highly structured semantic classes with annotatable fields

To become an extensible one-stop solution for editing/management/publication

Based on an analysis of (digital) ecosystems, accessibility first