

a)



b)



c)

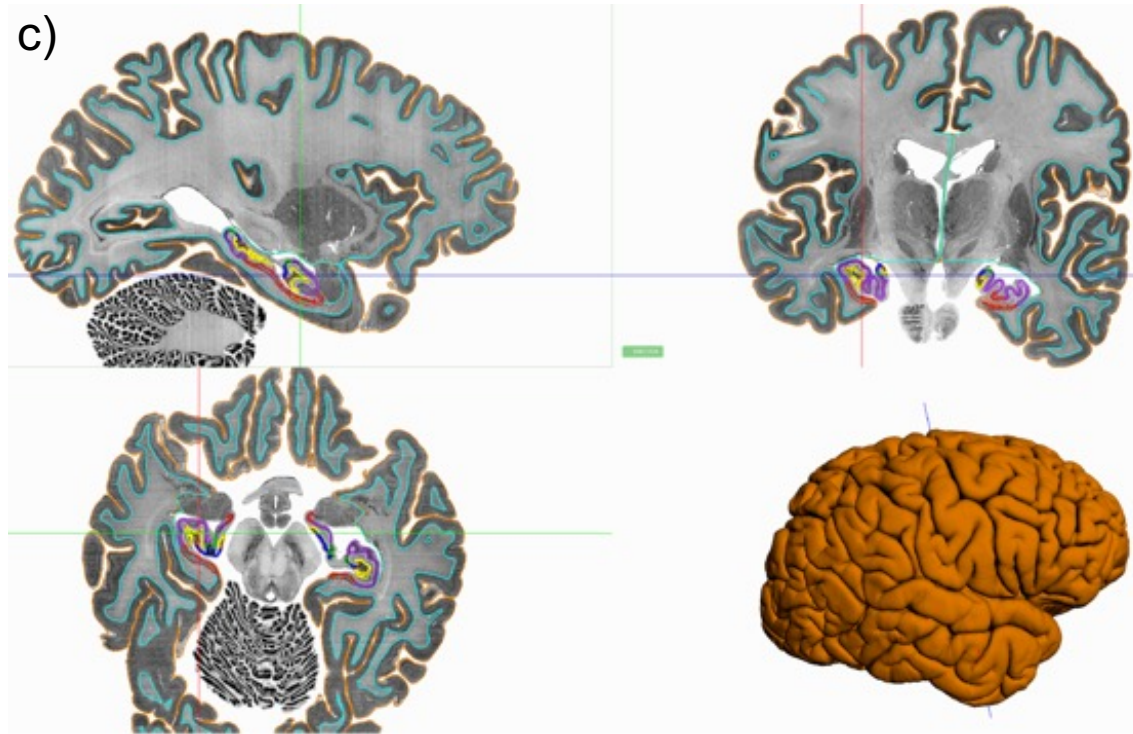


Figure 1: Visualisations of BigBrain2 reconstruction. a) Photograph of fixed BigBrain2. b) Pial surface reconstructed from histology. c) Cortical and hippocampal surfaces (courtesy of Lepage, DeKraker) visualised using Atelier3D at $50 \times 50 \times 100 \mu\text{m}$.