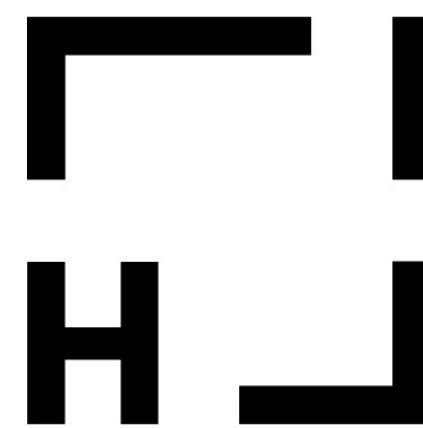


# Helmholtz Imaging



Philipp Heuser, Fabian Isensee, Deborah Schmidt, Knut Sander, Sara Krause-Solberg  
Spokespersons: Klaus Maier-Hein (DKFZ), Thoralf Niendorf (MDC), Christian Schroer (DESY)



dkfz.

MDC

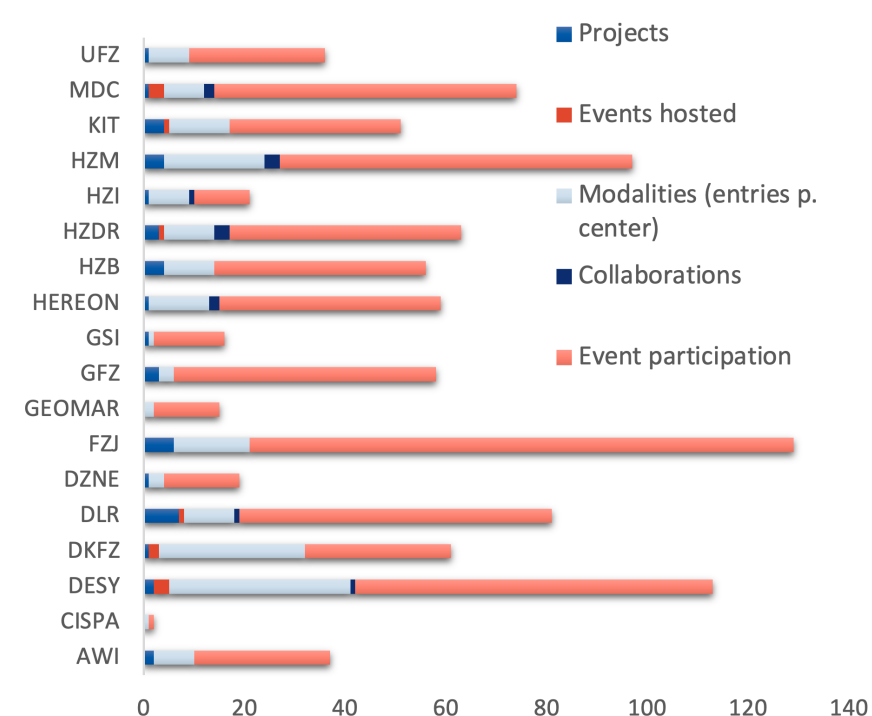
## Our Mission

Helmholtz Imaging's mission is to **unlock the potential of imaging** in the Helmholtz Association. Helmholtz Imaging is the overarching platform to better leverage and make accessible to everyone the innovative modalities, methodological richness, outstanding expertise and data treasures of the Helmholtz Association. **Imaging-based research projects** are encouraged to contact us for **scientific or technical support**, to enter into **collaborations** with our research groups, or to network with imaging experts from other Helmholtz programs. Helmholtz Imaging is implemented by DESY, DKFZ and MDC on behalf of the General Assembly.

## Our Research

Helmholtz Imaging covers the **entire spectrum from data acquisition, data preparation, data management to data analysis**. Each part of this imaging process is associated with specific scientific challenges and research software tools. Expertise on all these issues is available in the Helmholtz community. Helmholtz Imaging has three research units that specialize in different areas of the imaging pipeline: **modelbased inverse design, integrative imaging data science and image analysis & benchmarking**.

## Our Impact

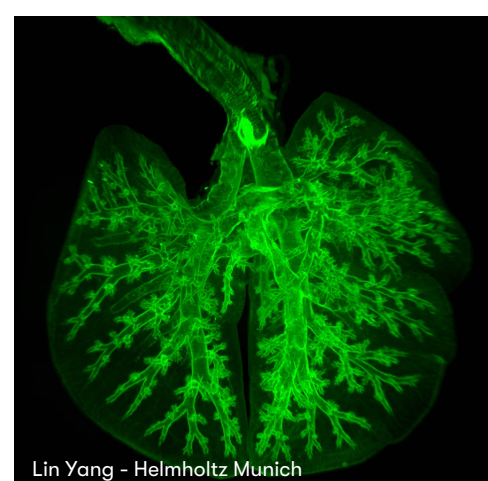


### Helpdesk & Collaborations

Exploit the expertise of Helmholtz Imaging, it is just one email away. Get in touch with us via our helpdesk – the gateway for all requests be it **support for data handling, consultation regarding software or methods, or research issues**.

Lets solve imaging challenges together. **Start a Helmholtz Imaging Collaboration with us**. Benefit from our broad knowledge on the rich pool of methods that enable state-of-the-art solutions tailored to your problems.

[helpdesk@helmholtz-imaging.de](mailto:helpdesk@helmholtz-imaging.de) 



Lin Yang - Helmholtz Munich



Hellmut Augustin - DKFZ  
Metastatic tumor cells in the lung

### Solutions

Help us share easy-to-use open-source imaging Solutions. We curate a catalog of Helmholtz Imaging Solutions developed within our community.

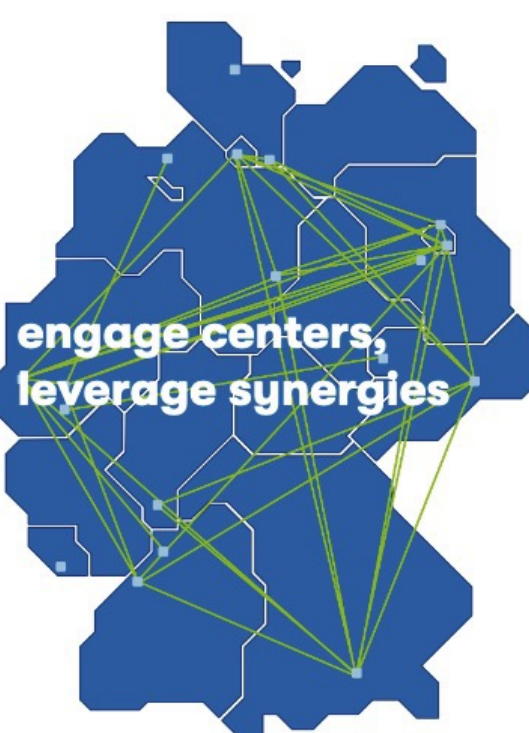
We offer a framework for reproducibly distributing solutions to specific scientific problems.

<https://album.solutions> 

### Storage

Share large imaging datasets with your collaborators, using Helmholtz Imaging Storage. Get your folder:

[helpdesk@helmholtz-imaging.de](mailto:helpdesk@helmholtz-imaging.de) 

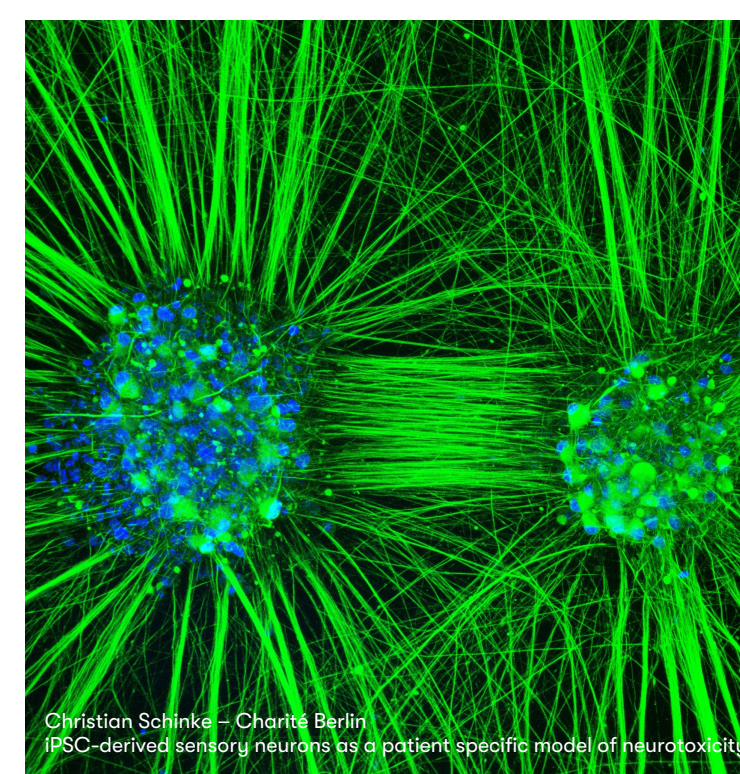


### Modalities & Network

Find imaging expertise and project partners at Helmholtz Imaging Modalities. Gain an overview of the broad spectrum of novel imaging modalities and find the experts you are looking for.

<https://modalities.helmholtz-imaging.de>

Be Helmholtz Imaging!  
Create your profile today! 



Christian Schinke - Charité Berlin  
iPSC-derived sensory neurons as a patient specific model of neurotoxicity



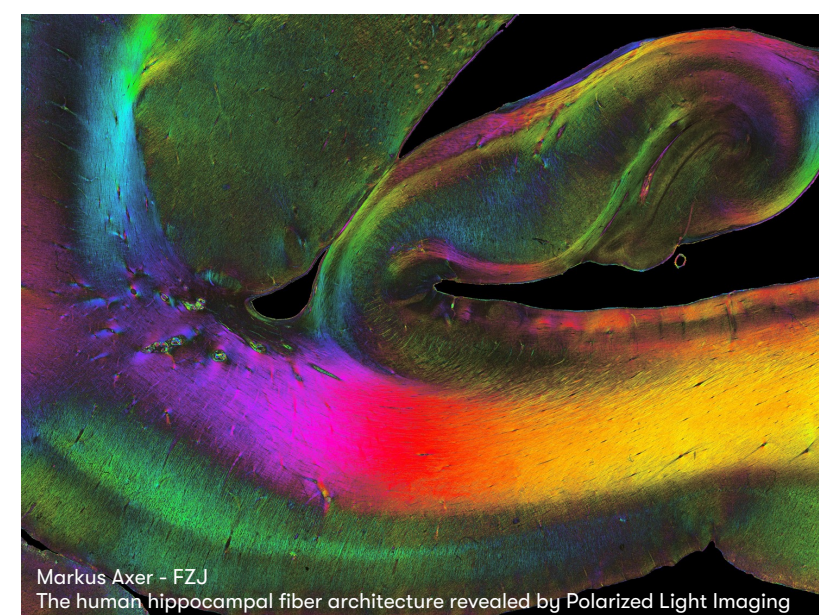
Klas Møller - Hereon  
Microcosmos of the Ocean

### Projects

Get funding for your inter-disciplinary research on imaging. Apply for our annual Helmholtz Imaging Projects calls.

Helmholtz Imaging Projects are granted to interdisciplinary research teams that systematically find and exploit synergies across modalities and research questions, highlighting common challenges and generalizing solutions across the Helmholtz community.

Stay tuned! Next open call spring 2023.



Markus Axer - FZJ  
The human hippocampal fiber architecture revealed by Polarized Light Imaging

**HELMHOLTZ  
IMAGING**

**Capturing the  
world of science.**

Stay in Contact:  
[helpdesk@helmholtz-imaging.de](mailto:helpdesk@helmholtz-imaging.de)

[www.helmholtz-imaging.de](http://www.helmholtz-imaging.de)