

Assessing and improving the interoperability and trustworthiness of research data repositories in the Earth System Sciences.

NFDI4Earth Label

NFDI4Earth Label

- **Heterogeneous landscape:** repositories and aggregators differ in features, metadata standards, and APIs
- **Lack of integration:** ESS repositories are isolated, making it difficult to combine data across disciplines
- **Existing certificates:** Frameworks like CoreTrustSeal or Nestor are not ESS-specific and are difficult to obtain for smaller repositories

Community-driven process

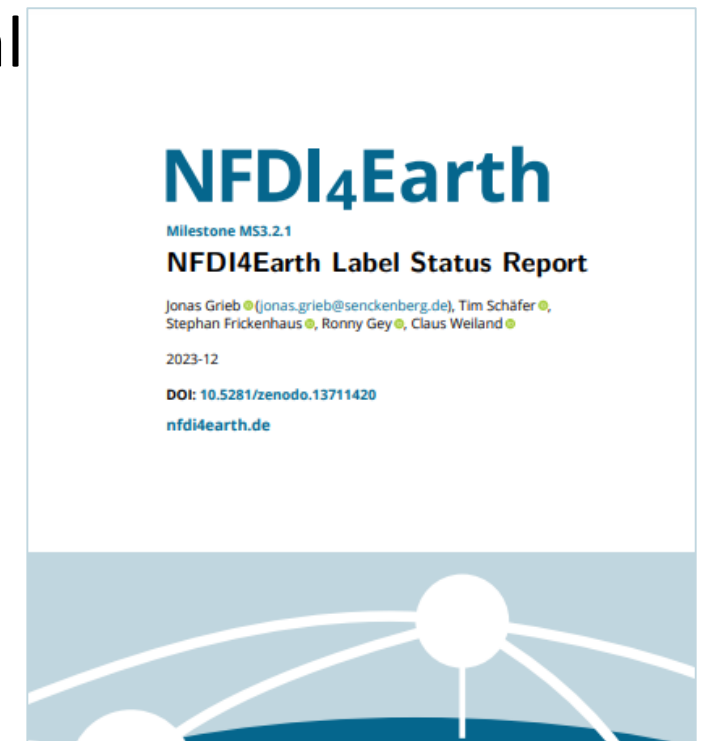
Goal:

Define indicators for **interoperability** of integrated **data infrastructures**, assessing the **FAIRness** of digital resources and supporting service harmonization



Participative development:

Criteria were developed together with the Earth System Science community



A semi-automated assessment procedure, that consists of:

- **re3data assessment** - automated retrieval of repository metadata from the global registry
- **self-assessment** - additional information provided by repository representatives
- **F-UJI assessment** (optional) - automated FAIR check of a dataset sample

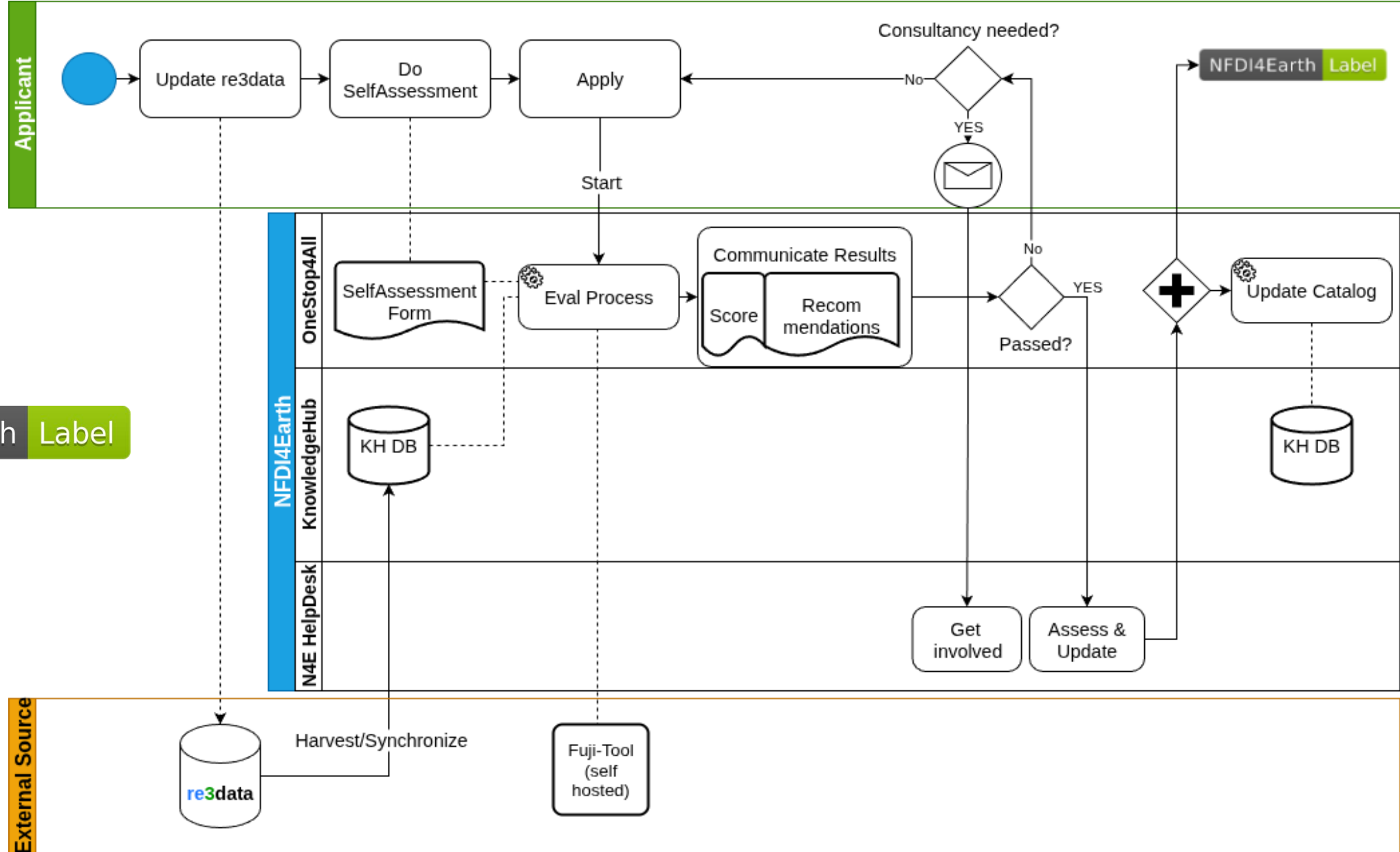
Re3data – an established foundation



Building on re3data.org as a established entry point for repositories

- Global visibility
- Unique identifiers
- Machine-readable metadata
- Strengthening existing infrastructures

Assessment Workflow



NFDI4Earth Label

Assessment Criteria

Re3data Assessment																											
N4E Metric	Guideline	Accepted Standards	Related FAIR principle																								
n4e:assignsUniqueIds																											
n4e:assignsPersistentIds																											
n4e:providesAnyAPI																											
n4e:p	Self-Assessment <table border="1"> <thead> <tr> <th>N4E Metric</th> <th>SAF Field</th> <th>Guideline</th> <th>Corresponding CTS criteria</th> </tr> </thead> <tbody> <tr> <td>n4e:hasBackupStrategy</td> <td>Backup Strategy</td> <td>The repository should have a backup strategy.</td> <td>R14</td> </tr> <tr> <td>n4e:hasArchivingStrategy</td> <td>Archiving Strategy</td> <td>The repository should have a long-term preservation strategy in place.</td> <td>R09</td> </tr> <tr> <td>n4e:hasFundingStatement</td> <td>Funding</td> <td>The repository should have a funding statement, mission statement or some other self description that allows users to understand the purpose of the repository, which institution runs it, and how it is funded. The mentioned information should be made clear to repository users on the repository website.</td> <td>R05</td> </tr> <tr> <td>n4e:hasCuration</td> <td>Curation</td> <td>The repository should have data curation. The degree of curation should be made clear to repository users on the repository website.</td> <td>R08/R10</td> </tr> <tr> <td>n4e:hasUserSupport</td> <td>User Support</td> <td>The repository should have some form of user support. The options for user support should be made clear to repository users on the repository website.</td> <td>R06</td> </tr> </tbody> </table>			N4E Metric	SAF Field	Guideline	Corresponding CTS criteria	n4e:hasBackupStrategy	Backup Strategy	The repository should have a backup strategy.	R14	n4e:hasArchivingStrategy	Archiving Strategy	The repository should have a long-term preservation strategy in place.	R09	n4e:hasFundingStatement	Funding	The repository should have a funding statement, mission statement or some other self description that allows users to understand the purpose of the repository, which institution runs it, and how it is funded. The mentioned information should be made clear to repository users on the repository website.	R05	n4e:hasCuration	Curation	The repository should have data curation. The degree of curation should be made clear to repository users on the repository website.	R08/R10	n4e:hasUserSupport	User Support	The repository should have some form of user support. The options for user support should be made clear to repository users on the repository website.	R06
N4E Metric	SAF Field	Guideline	Corresponding CTS criteria																								
n4e:hasBackupStrategy	Backup Strategy	The repository should have a backup strategy.	R14																								
n4e:hasArchivingStrategy	Archiving Strategy	The repository should have a long-term preservation strategy in place.	R09																								
n4e:hasFundingStatement	Funding	The repository should have a funding statement, mission statement or some other self description that allows users to understand the purpose of the repository, which institution runs it, and how it is funded. The mentioned information should be made clear to repository users on the repository website.	R05																								
n4e:hasCuration	Curation	The repository should have data curation. The degree of curation should be made clear to repository users on the repository website.	R08/R10																								
n4e:hasUserSupport	User Support	The repository should have some form of user support. The options for user support should be made clear to repository users on the repository website.	R06																								
n4e:s																											
n4e:s																											
n4e:hasDescriptiveMetadata																											
n4e:metadataIncludesIdentif																											
n4e:metadataLinks																											
n4e:includesLicense																											
n4e:includesProvenance																											
n4e:metadataRepresentation																											
	Metadata of records stored in the repository should specify the content of the data: the type of the object and technical properties like file format, size, and names.	FsF-R1-01MD																									

Demo



<https://onestop4all.nfdi4earth.de/label/>

- N4E Label is live
- Process is straightforward, relying on existing tools (re3data, F-UJI)
- Discussions about implementation on NFDI level & w/ other consortia
- direct link (guess who;) when any changes would be necessary

So what now HGF?

- ***Our challenge***: we can not assess each single data publication. Instead
=> evaluation of repositories needed
- Alternatives e.g. CoreTrustSeal too demanding