



THE CONCEPT OF HELMHOLTZ AI

On a mission for democratizing AI

Sebastian Starke, Till Korten

Helmholtz-Zentrum Dresden-Rossendorf / 2025-03-20

AS A PART OF THE HELMHOLTZ ASSOCIATION...

We are one of the Incubator platforms.

HiDA <HMC>

HELMHOLTZ
IMAGING

HIFIS

6

LOCAL UNITS

Earth @ Hereon
Energy @ KIT
Matter @ HZDR
Space @ DLR
Health @ HMGU
Info @ FZJ

We advance AI and democratise access to it across all scientific domains at Helmholtz.

We do this by offering AI consulting, computing resources, project funding & novel tools and research.

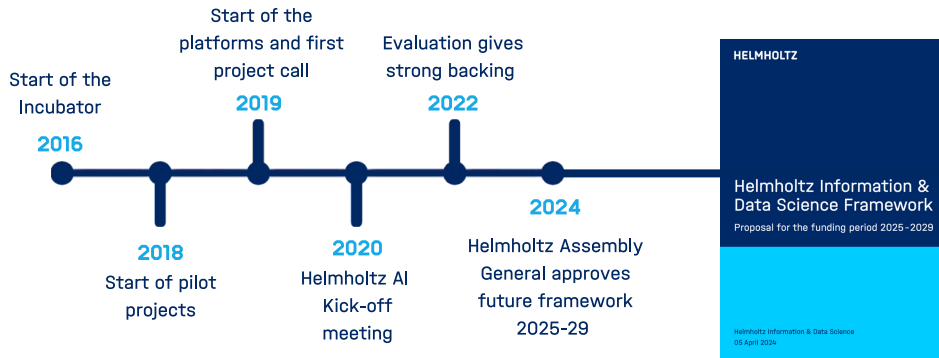


KEY OBJECTIVES

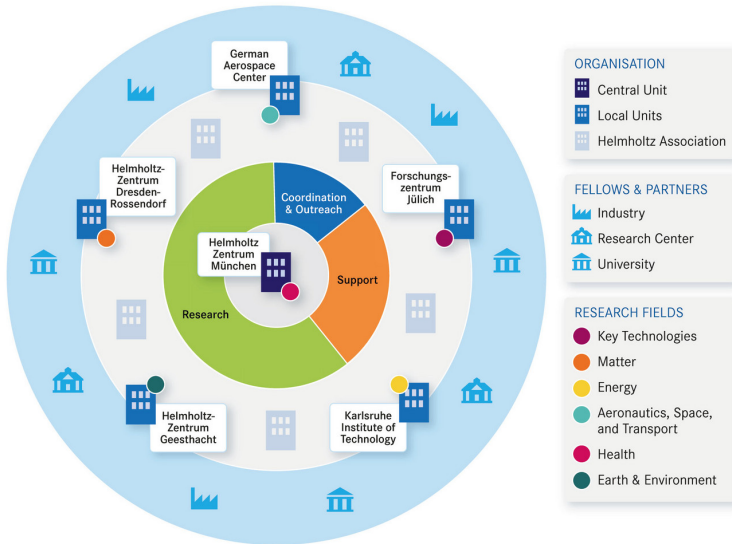


HELMHOLTZ AI GOING FORWARD

FROM PATHBREAKING BOTTOM-UP INITIATIVES TO INTEGRATED FRAMEWORK



WE ARE A NETWORK ACROSS GERMANY



THE FACES BEHIND THE SCIENCE

CONSULTING

RESEARCH



Peter Steinbach
Matter (HZDR)



Marie Piraud
Health (Helmholtz Munich)



Tobias Weigel
Earth and Environment (DKRZ -
Hereon)



Markus Götz
Energy (KIT)



Daniela Espinoza Molina
Aeronautics, space and
transportation (DLR)



Stefan Kesselheim
Information (JSC - FZJ)



Schiffer Group
Large-scale artificial intelligence
for brain mapping



Greenberg Group
Model-driven machine learning



Albrecht Group
Large-scale data mining in
earth observation



Albarqouni Group
Deep federated learning in
healthcare



Kilbertus Group
Reliable machine learning



Peng Group
AI for microscopy and
computational pathology



Urban Group
One Health



Fortuin Group
Efficient learning and probabilistic
inference for science



Kelling Group
AI for Future Photon Science



Schäfer Group
Data-driven analysis of
complex systems



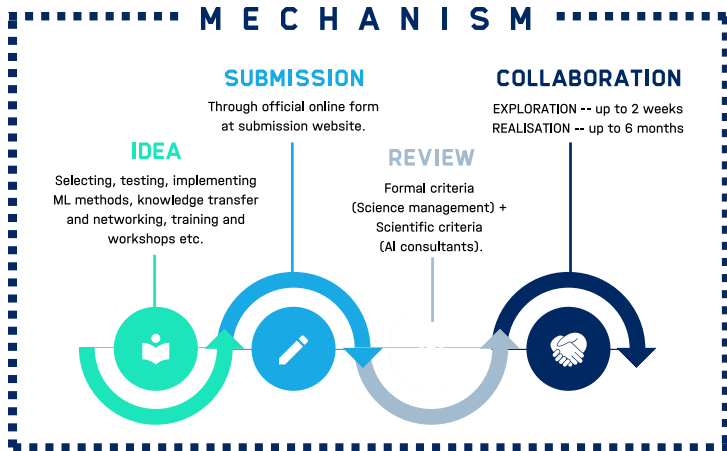
Akata Group
Explainable Machine Learning



Bauer Group
Data Science and Intelligent
Systems

HELMHOLTZ AI CONSULTANCY

Leverage AI methods & expertise & set up flexible, dynamic and transparent collaborations with the Helmholtz AI consultant teams, free of charge.



HELMHOLTZ AI COMPUTING RESOURCES

Computing resources (HAICORE, more invest coming) provide easy, free and low-barrier GPU access to the entire AI community within the Helmholtz Association.

Simple, unbureaucratic access through our website.

Intros + user support by the consultant teams at KIT and FZJ.

Lightweight projects of up to 5,000 GPU hours per half year at Forschungszentrum Jülich (FZJ; JUWELS Booster)

Ad-hoc usage for initial testing with data and/or AI methods at Karlsruhe Institute of Technology (KIT; HoreKa)

WE EXPAND CAPACITY
AND ADD MORE
OPERATING CENTERS TO
REALISE **HAICORE 3.0**

