

Figure: Model Explainability in Cortical Thinning Predictions.

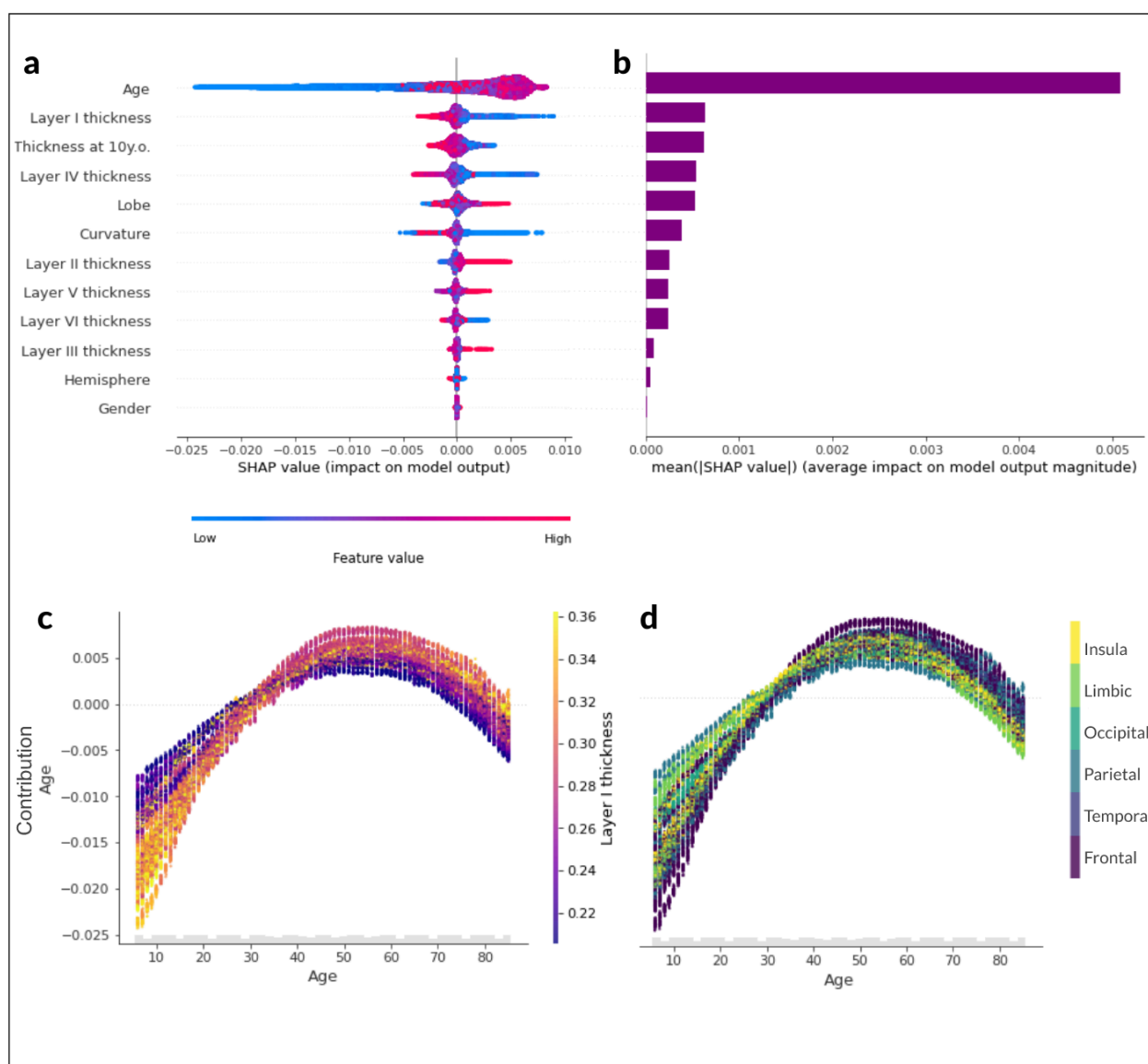


Figure: (a) Features contribution to the model ranking, color-coded by feature value and distributed by positive/negative impact in the thinning model. (b) Mean absolute contribution of each feature to the model ranking. (c-d) Age contribution to thinning throughout the lifespan color-coded by layer I thickness and by lobes (smaller contribution values indicate an increase in thinning levels).