



JuRSE: A Jülich Community of RSE Practice

13th February 2025 | CLAIRE WYATT

Member of the Helmholtz Association

ABOUT ME

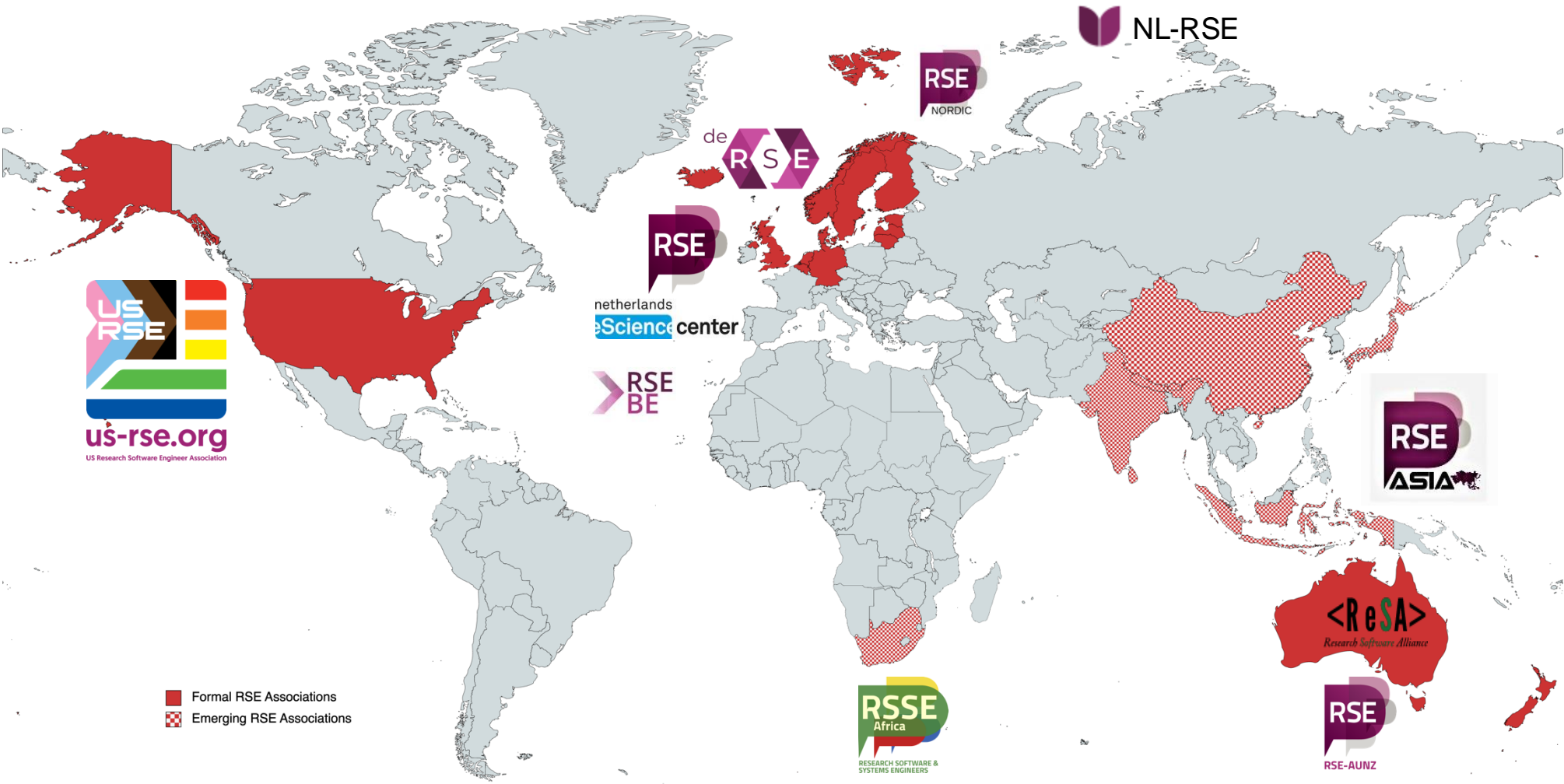
My role: *Community Manager for Research Software Engineering (RSE)*



THE WORLDWIDE RSE MOVEMENT



INTERNATIONAL COUNCIL
OF RSE ASSOCIATIONS



A SCIENTIFIC COMMUNITY OF PRACTICE

A group of people who share

common concerns

common challenges

interest in a topic

come together to fulfil both individual and group goals

They focus on

sharing best practice


creating new knowledge

to

advance a domain of professional practice.


JuRSE – Jülich RSE Community of Practice



**JuRSE**

The Latest Community Initiatives Resources Collaborations About

Welcome to JuRSE, the community of practice for *scientists who code*



JuRSE is a FZJ-wide initiative working to raise **awareness and increase visibility** for scientists who code as well as to **improve good practice of research software**. We aim to promote the **impact on research**, highlighting the increasingly critical and valuable role research software and coding serves here.

We believe that **creating a community** will lead to more recognition and professionalisation at the same time as helping those scientists who code to be part of a professional community of practice.

The practice of coding in research is known as 'Research Software Engineering' so our community name is Jülich Research Software Engineering = JuRSE.

Our key visual includes the well-known motto for Research Software Engineering **"Better Software, Better Research"**. This motto was created by the Software Sustainability Institute and has since been adopted around the world.

Join the Community of Practice!
Joining the JuRSE Community of Practice and getting involved is simple!
Let's briefly show you what this community can do for you and what you can do to engage.

▶ Increase good practice, visibility and awareness

▶ Encourage adoption of the software and publication guidelines



Software Guidelines

GUIDELINES FOR THE DEVELOPMENT AND DISTRIBUTION OF SOFTWARE AT FORSCHUNGSZENTRUM JÜLICH

Resources

We've gathered many resources for research software engineering from internal and external sources along with internal guidelines.

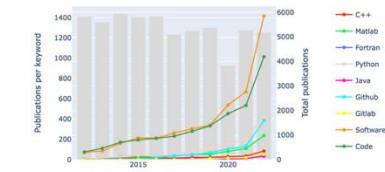
This table below is a visual aid with information taken from the 'Minimum standards and measures for the software application classes'. For fuller information, read the [Guidelines for the Development and Distribution of Software](#) at FZJ.

Click on the links to learn more	Class 0	Class 1	Class 2	Class 3
Legal Aspects	✓	✓	✓	✓
Version Control Systems	*	✓	✓	✓
Documentation		✓	✓	✓
Citation		✓	✓	✓
Verification & Validation		✓	✓	✓
Release Management & Maintenance		✓	✓	✓
Software Publication		✓	✓	✓
Distribution & Open Source			✓	✓



Guidelines for the Development and Distribution of Software at Forschungszentrum Jülich

FZJ



Research Software Publication Monitor

An online tool to show how much people at FZJ write about research software.

▶ Increase good practice, visibility and awareness

▶ Encourage adoption of the software and publication guidelines



Tools - Software Guidelines

CHECKLIST FOR THE DISTRIBUTION OF SOFTWARE CODE

Date

Name of Software Code

Institute

Contact

Find more information and contact persons at <https://intranet.fz-juelich.de/en/topics/rse>
 General contact for Research Software Engineering topics at FZJ: rse@fz-juelich.de

Copyrights and third-party rights

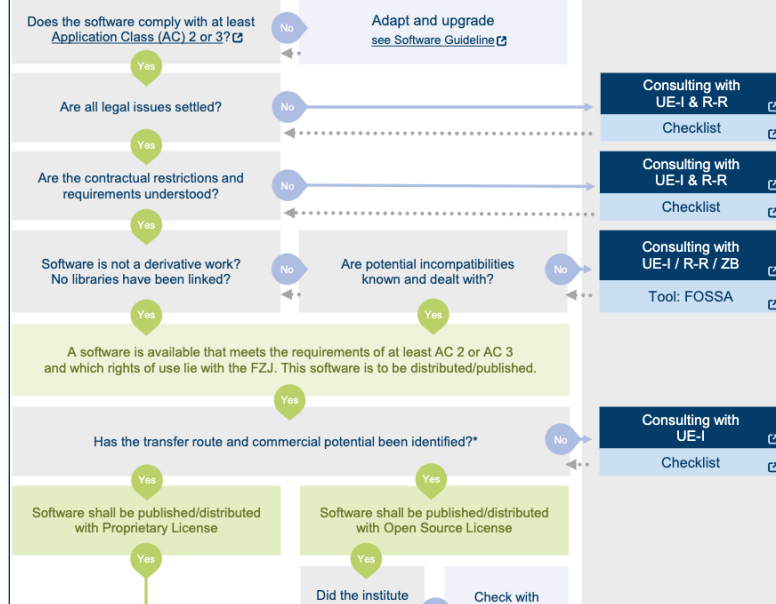
"All copyrights must be held by Forschungszentrum Jülich" and "All authors need to be known".

- ☐ All authors of the software code are known and their names can be disclosed.
- ☐ All authors have developed the software code as employees of Forschungszentrum Jülich and the rights of use are held by Forschungszentrum Jülich.
If not:
 - ☐ - Third-party institutions are known.
 - ☐ - Forschungszentrum Jülich holds rights of use from these third-party institutions in written form.

Contractual obligations and restrictions

- ☐ Funding or grant regulations, cooperation agreements, grant agreements, and

Publication/Dissemination of Software Code Decision Tree



Support

Decision-making tools

Find all tools at: [RSE Portal](#)

Interactive Software Guideline Tool

Check on software application classes

Application class of the software

0 3

If you don't know the application class, see the links above to determine it (by table or by decision tree)

Your chosen application class is 2

URL of the git-repository

For software of category 2, the following standards must be fulfilled.

If you assume to fulfill a standard, please tick the corresponding box.

☐ Consideration of legal aspects

Consideration of legal aspects (e.g. third-party rights) is an integral part of the software development process and requires appropriate documentation (e.g. copyright notices).

☐ Usage of version control

Version control systems and code repositories are used that contain or refer to all components of the software required for its use, and that are used for change management.

► Increase good practice, visibility and awareness

► Encourage adoption of the software and publication guidelines



Publications Directive

2.2 The procedure regulated subsequently in B. (Procedure) is applicable to all scientific publications according to A 2.1, especially in the form of:

- journal articles
- preprints
- Jül-Bericht or articles in a series of works published by Jülich's publishing house
- habilitations
- doctoral theses
- theses such as bachelor's and master's theses (insofar as they are to be published)
- books or book chapters
- conference papers
- **research software**
- research data

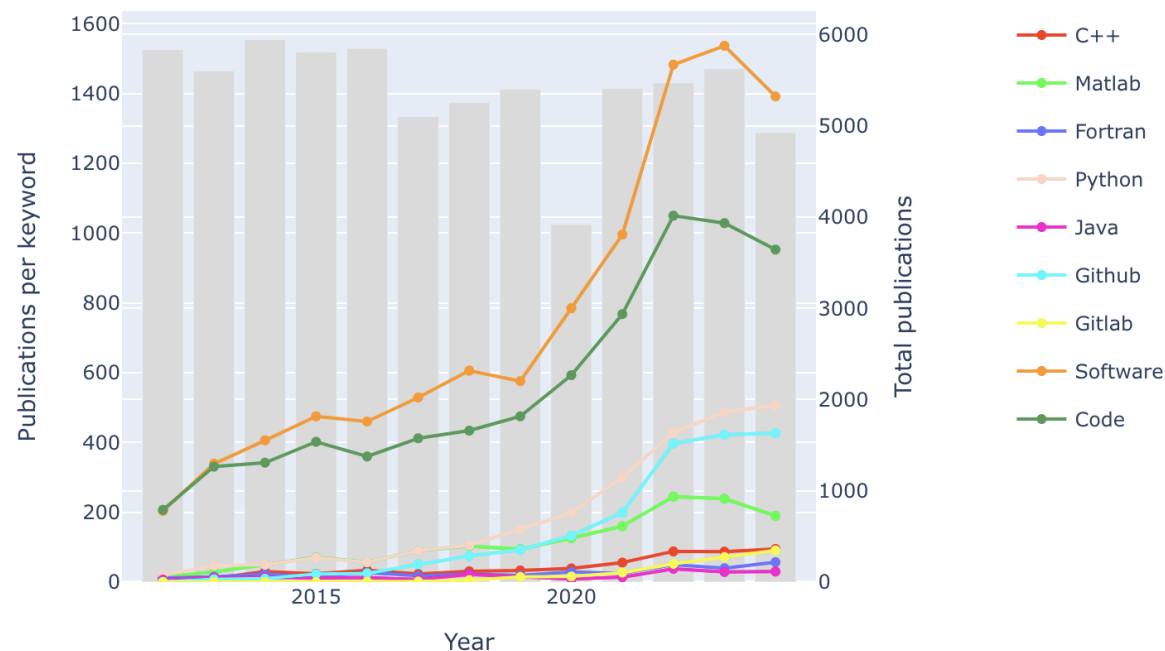
► Increase good practice, visibility and awareness

► Encourage adoption of the software and publication guidelines

Research Software Publication Monitor

Publications from the whole JuSER publication database.

FZJ



<https://go.fzj.de/rse-publication-monitor>

- ▶ Increase good practice, visibility and awareness
- ▶ Encourage adoption of the software and publication guidelines



JuRSE – Jülich RSE Community of Practice



Join the community platform (online)

Meet other RSEs at FZJ and Germany!



Join us at JuRSE Open Hours

In-person and online, we're here to help!



JuRSE Code of the Month

A code in the spotlight



JuRSE Newsletters

Read about RSE News, events, blogs and podcasts



JuRSE Travel Grants

Go to an RSE Conference on us!

How to Get Funding By Caring About Research Software

DRA
DIGITAL RESEARCH ACADEMY

Heidi Seibold
04.02.2025

Join the Miro Board (see chat) and get started with the CHECK IN.

Slides are licensed under CC-BY 4.0
digital-research.academy

▶ Increase good practice, visibility and awareness

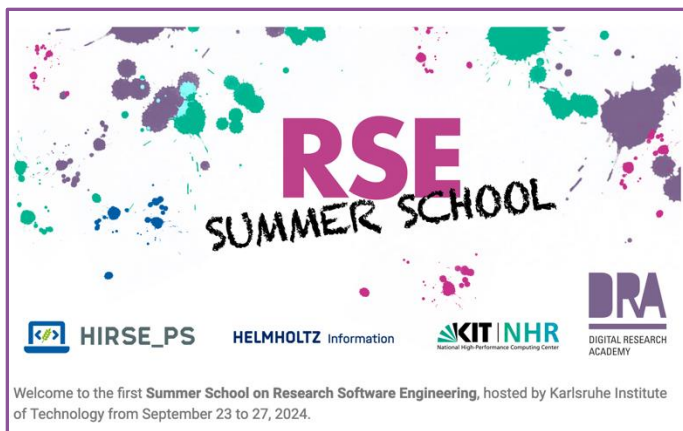
▶ Encourage adoption of the software and publication guidelines



JuRSE – Jülich RSE Community of Practice and HiRSE (Helmholtz RSE)



The HiRSE Seminar Series



The HiRSE Code Promotion

shining a light on German RSEs' work

igraph
igraph.org – DOI ✓

Description

- Create graphs and store data in them
- Analyse complex networks
- Do graph theory

Highlights

- Leading network analysis software for 20 years
- Programmable in multiple languages (R/Python/Mathematica/C)
- Implements rigorous analysis techniques that you can rely on

If we had a wish...
Fund the project to ensure igraph's continued existence

Promoting Research Software: Made in Germany

HIRSE



JuRSE – Jülich RSE Community of Practice

Future Plans

- Hiring a team member to support our activities (also within FutuRSI)
- Planning our first JuRSE led training session on automated testing
- Giveaways
- Monthly Community Calls
- Building the community in all institutes
- Continue to give seminars around FZJ about the guidelines
- Support the adoption of the new software quality indicator