

# Helmholtz AI

Dr. Christoph Feest  
*Head of science management*  
*@FeestChristoph*



# Helmholtz Association

## What is the Helmholtz Association?

---



founded in  
**1995**



Germany's **largest**  
scientific organisation



**42,178**  
employees



**5 billion**  
annual budget



**2,000**  
joint projects with  
companies a year



**18**  
research institutions



**7,000** foreign  
scientists



**20** new high-tech  
spin-offs a year

# Helmholtz Association

## What is the Helmholtz Association?



founded in  
**1995**



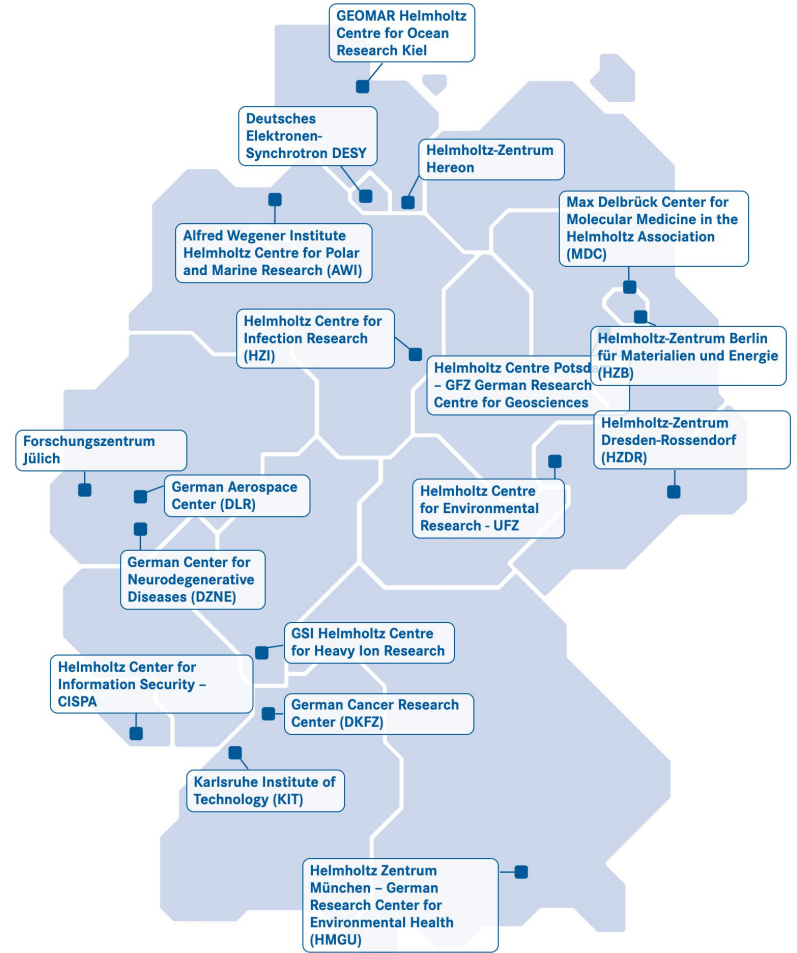
Germany's **largest**  
scientific organisation



**2,000**  
joint projects with  
companies a year



**18**  
research institutions



# The six Research Fields of the Helmholtz Association



**18**  
research centers



**€5bn**  
overall budget



**42,178**  
employees

# The six Research Fields of the Helmholtz Association



ENERGY

EARTH AND ENVIRONMENT

HEALTH

AERONAUTICS, SPACE AND TRANSPORT

MATTER

KEY TECHNOLOGIES (IN THE FUTURE: INFORMATION)

*Everyone has BIG data.*

Imaging

-omics

Health records

18 research centers

overall budget

42,178 employees

# Helmholtz AI is part of...

...data science initiatives within the Helmholtz Association

---



Research, funding  
& support





## Maximise research impact by democratising access to AI

- Foster **cross-field creativity**
- **Identify & leverage similarities**  
between applications
- Integrate **field-specific excellence**
- Improve **quality, scalability and  
availability** of emerging methods
- Empower current &  
**next generation of scientists**

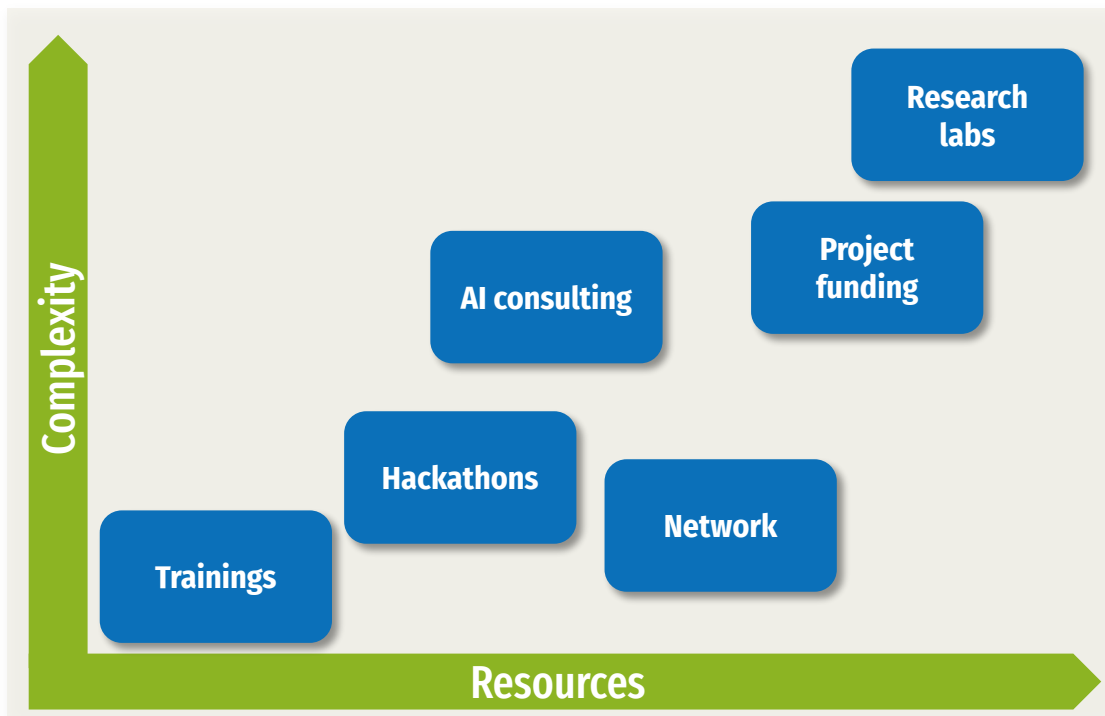
# Helmholtz AI

in a nutshell



## Maximise research impact by democratising access to AI

- Foster **cross-field creativity**
- **Identify & leverage similarities** between applications
- Integrate **field-specific excellence**
- Improve **quality, scalability and availability** of emerging methods
- Empower current & **next generation of scientists**





# Helmholtz AI

## in a nutshell

HELMHOLTZAI | ARTIFICIAL INTELLIGENCE  
COOPERATION UNIT



@helmholtz\_ai

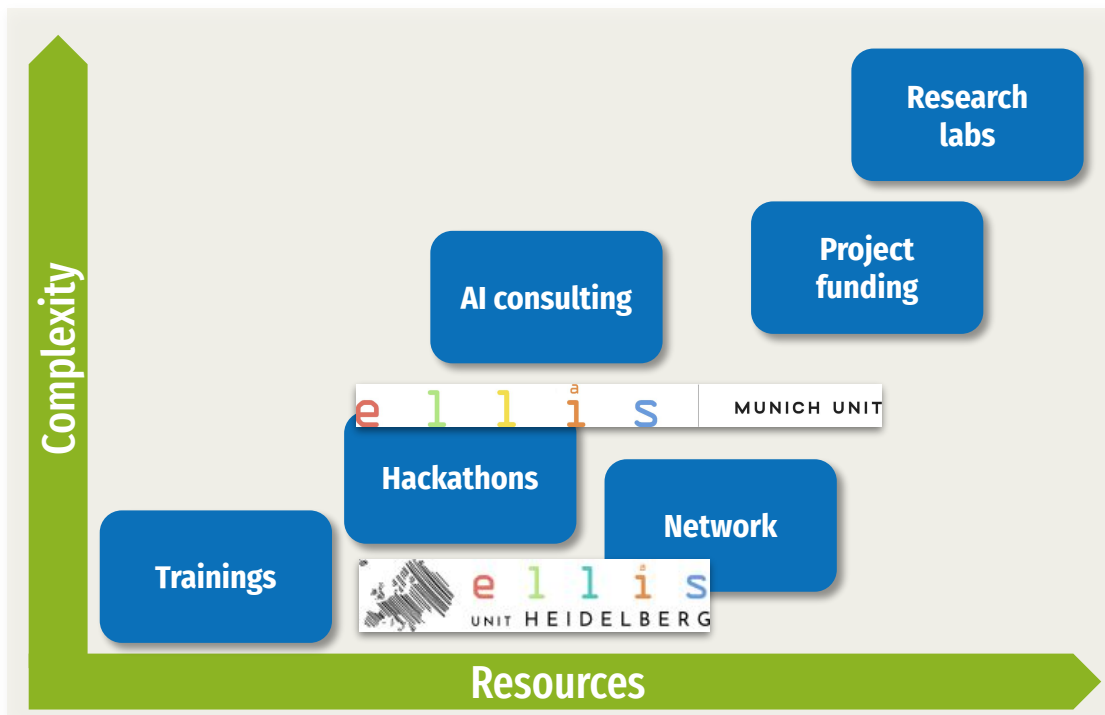


HelmholtzAI



### Maximise research impact by democratising access to AI

- Foster **cross-field** creativity
- **Identify & leverage** similarities between applications
- Integrate **field-specific** excellence
- Improve **quality, scalability and availability** of emerging methods
- Empower current & **next generation of scientists**



# Helmholtz AI

in a nutshell

**HELMHOLTZ**AI | ARTIFICIAL INTELLIGENCE  
COOPERATION UNIT



@helmholtz\_ai

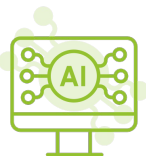


HelmholtzAI

# 6

LOCAL UNITS

Earth @ Hereon  
Energy @ KIT  
Matter @ HZDR  
Space @ DLR  
Health @ HMGU  
Info @ FZJ



RESEARCH

- 7 early career PIs
- 2 senior PIs (soon)
- >30 researchers
- >30 associates



SUPPORT

- 6 AI consultant teams
- 39 AI consultants



MANAGEMENT

- 3 Project managers
- 1 Outreach manager
- 1 Network manager
- 2 Exec. assistants



**FABIAN THEIS**

Helmholtz AI  
scientific director

@fabian\_theis

# 36

HELMHOLTZ AI PROJECTS  
(2019+20)

# >100 >100

AI CONSULTINGS

TRAININGS &  
HACKATHONS

# 12 M€/Y



www.helmholtz.ai  
contact@helmholtz.ai

**HELMHOLTZ**AI

# Helmholtz AI

## in a nutshell

HELMHOLTZAI | ARTIFICIAL INTELLIGENCE COOPERATION UNIT



@helmholtz\_ai



HelmholtzAI

# 6

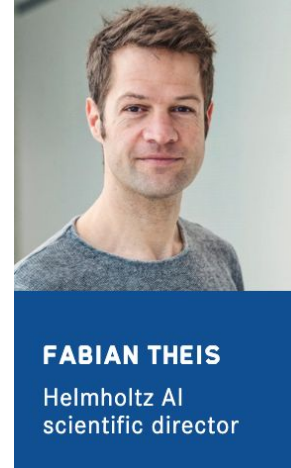
LOCAL UNITS

Earth @ HZG  
Energy @ KIT  
Matter @ HZDR  
Space @ DLR  
Health @ HMGU  
Info @ FZJ



## Maximise research impact by democratising access to AI

- Foster **cross-field** creativity
- **Identify & leverage** similarities between applications
- Integrate **field-specific** excellence
- Improve **quality, scalability and availability** of emerging methods
- Empower current & **next generation of scientists**



**FABIAN THEIS**  
Helmholtz AI  
scientific director



# 12 M€

INVESTED/YEAR

# Helmholtz AI

in a nutshell

HELMHOLTZAI | ARTIFICIAL INTELLIGENCE COOPERATION UNIT



@helmholtz\_ai

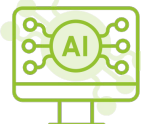


HelmholtzAI

6

LOCAL UNITS

Earth @ HZG  
Energy @ KIT  
Matter @ HZDR  
Space @ DLR  
Health @ HMGU  
Info @ FZJ



RESEARCH

- 7 Young Investigator Groups
- 2 Senior Investigator Groups soon
- 30 researchers



SUPPORT

- 6 AI consultant teams
- 39 AI consultants



MANAGEMENT

- 3 Project managers
- 1 Outreach manager
- 2 Exec. assistants
- 1 Software developer



## Maximise research impact by democratising access to AI

- Foster **cross-field** creativity
- **Identify & leverage** similarities between applications
- Integrate **field-specific** excellence
- Improve **quality, scalability and availability** of emerging methods
- Empower current & **next generation of scientists**

36

HELMHOLTZ AI PROJECTS  
(2019+20)

>100 >100

AI CONSULTING VOUCHERS

WORKSHOPS &  
HACKATHONS

12 M€



[www.helmholtz.ai](http://www.helmholtz.ai)  
[contact@helmholtz.ai](mailto:contact@helmholtz.ai)

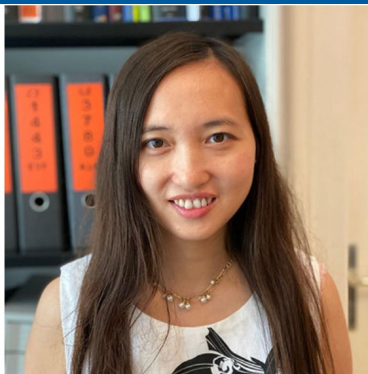
# Helmholtz AI

## Local PIs - Health



### KILBERTUS GROUP

Reliable machine learning



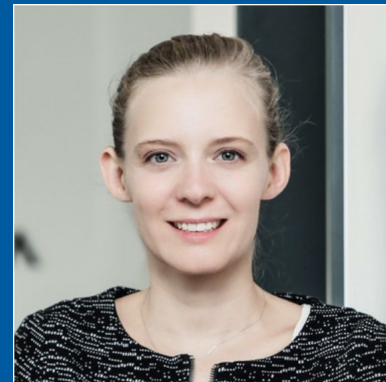
### PENG GROUP

AI for microscopy and computational pathology



### ALBARQOUNI GROUP

Deep federated learning in healthcare



### PIRAUD TEAM

Health (HMGU)

## Research groups

## AI consultant team

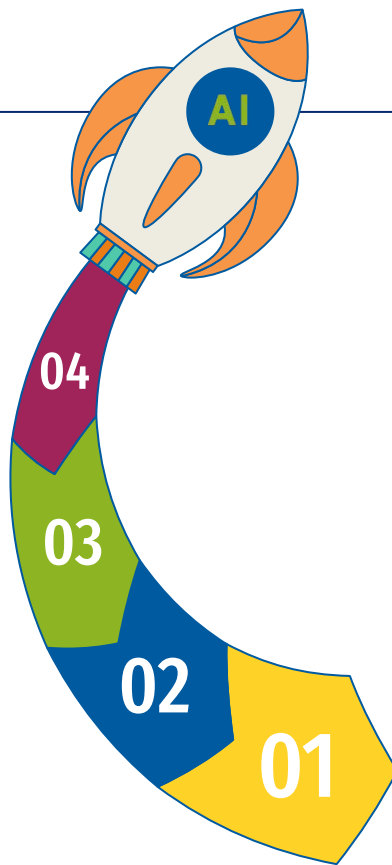
# Helmholtz AI

## Consulting

Flexible, dynamic  
and transparent  
**setting up of (free!)  
collaborations** with  
the **Helmholtz AI  
consultant teams**

[voucher-system.helmholtz.ai](https://voucher-system.helmholtz.ai)

More info: [bit.ly/HelmholtzAIVoucher](https://bit.ly/HelmholtzAIVoucher)



### COLLABORATION

EXPLORATION -- up to 2 weeks

REALISATION -- up to 6 months

### REVIEW

Formal criteria (Science management)

Scientific criteria (AI consultants)

### SUBMISSION

Through official online form  
at submission website


### IDEA

Selecting, testing and implementing ML  
methods, knowledge transfer and  
networking, training and workshops,  
benchmark datasets...



# Helmholtz AI

## Helmholtz AI project call timeline

- 
- **9th August 2021: call open**
  - **1st September 2021: submission portal open**
  - **1st December 2021: submission deadline**
  - **December and early 2022: review process and selection**
  - **Spring 2022: selected projects will be announced**

Outreach & proposal planning

Dedicated submission portal:  
<https://application.helmholtz.ai>

Submit proposals until end of  
day (CET)

External  
review

Formal criteria check

virtual panel meeting

Projects selected and starting

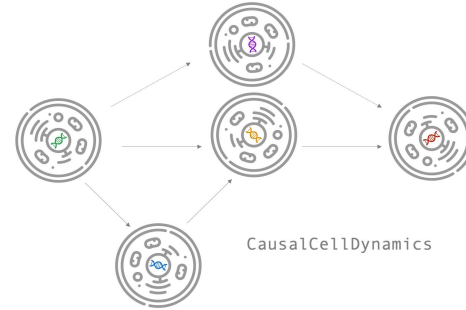


# Helmholtz AI

Helmholtz international labs cross continents to unleash the potential of AI communities working together

---

In the 'Helmholtz International BigBrain Analytics and Learning Laboratory' researchers from **McGill University and MILA in Montreal** and **FZJ/Helmholtz AI in Jülich** develop novel AI-based methods for analyzing high-resolution image data. They create new highly detailed maps of brain areas, cortical layers, and subcortical structures for microscopic models of the human brain.



The Helmholtz International Lab 'Causal Cell Dynamics' brings together 3 sites with pioneering roles in artificial intelligence - **Mila in Montreal, MPI in Tübingen and ICB + Helmholtz AI in Munich**. The major aim is to develop methods for causally structured deep representation learning in order to improve our understanding of cellular decisions.

# Helmholtz AI

## Network and collaborations



Helmholtz AI connects with the European Laboratory for Learning and Intelligent Systems (ELLIS) through its **ELLIS fellows, members and PhDs** and through their involvement in the **ELLIS Units Munich** and Heidelberg.



[www.ellismunich.ai](http://www.ellismunich.ai)



HIDA **supports the mobility of several young talents and exchange scientists from abroad** who are currently working jointly with Helmholtz AI researchers, e.g. two Israeli students at Helmholtz AI in Geesthacht.



# Helmholtz AI

## Community and resources

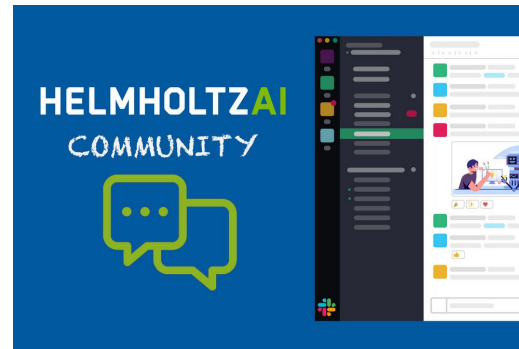
Online since autumn 2020: The “Helmholtz AI computing resources” (HAICORE, €2.5m) provide easy, free and **low-barrier GPU access** to the entire AI community within the Helmholtz Association.

- **Ad-hoc usage** for initial testing with data and/or AI methods
- Lightweight projects of **up to 10,000 GPU hours** per year

HAICORE is operated by Jülich and Karlsruhe.



[www.helmholtz.ai](http://www.helmholtz.ai)



The 'Helmholtz AI community' workspace is a **dedicated networking space** for Helmholtz researchers to share information and meet other AI/ML enthusiasts, e.g. to partner up for the annual Helmholtz AI project call.

# Helmholtz AI

## Jobs...

The German Climate Computing Centre (DKRZ) is the central data processing facility for the German climate and Earth system modeling community and is one of the leading facilities in this area. DKRZ operates supercomputers of the highest performance class, modern high-performance clusters and graphics systems as well as one of the largest data and archive systems worldwide.



For the AI Consultant team we are hiring for positions that will start as soon as possible (specific dates can be discussed individually).

### ML Software Engineer & Scientific Programmer (all genders)

To improve the infrastructure for climate modelling, DKRZ participates in many national and international projects. Through its research group on Scientific Computing, DKRZ is linked to the Department of Informatics at the University of Hamburg.

The Helmholtz Association (HGF) initiated the Helmholtz Artificial Intelligence platform (<https://helmholtz.ai>). This future-oriented network for applied Artificial Intelligence develops, implements and disseminates methods of Artificial Intelligence for purposes including the analysis of complex systems in the fields of energy, transport, climate and health. The Helmholtz AI local unit AIM (Artificial Intelligence Innovation for Earth System Analytics and Modelling) provides application-oriented AI capabilities for the field of Earth System and climate science, with a specific focus on Machine Learning (ML) methods. AIM consists of scientific partners, including a research group at Helmholtz-Zentrum Hereon and a support team of AI Consultants at DKRZ. The

### Helmholtz AI central unit @ Helmholtz Zentrum München (HMGU):

- **Helmholtz AI consultants (Health; until Sept 29, 2021)**
- **Senior Helmholtz AI consultants (Health; until Sept 29, 2021)**
- **Machine Learning Engineer for AI applications (until Sept 29, 2021)**

Check:  
<https://www.helmholtz-hida.de/en/jobs/>

Scientific / postdoctoral posts

### Postdoc in Computational and Systems Neuroscience

📍 Jülich 🏢 Forschungszentrum Jülich

Scientific / postdoctoral posts

### 59924: Computer Scientist, Physicist or similar (f/m/x) - Anomaly detection for maritime focused detector systems

📍 Bremerhaven 🏢 German Aerospace Center (DLR)

Scientific / postdoctoral posts

### Research associate / PhD candidate (f/m/d) Machine learning for design of chemical engineering unit operations

📍 Karlsruhe 🏢 Karlsruhe Institute of Technology (KIT)

**HiDA** | **HELMHOLTZ**  
Information & Data Science Academy

# Helmholtz AI

Connect with us

---

**HELMHOLTZAI** | ARTIFICIAL INTELLIGENCE  
COOPERATION UNIT



@helmholtz\_ai



HelmholtzAI



[www.helmholtz.ai](http://www.helmholtz.ai)  
[contact@helmholtz.ai](mailto:contact@helmholtz.ai)