



First Evidence from the NFDI initiative FAIRagro



**Universities, universities
of applied sciences**

...engaging in the field of agricultural sciences and related disciplines as well relevance for FAIR research data management

Governmental Infrastructure
and service providers

Professional societies,
associations, Think-Thanks

Initiatives, networks,
projects

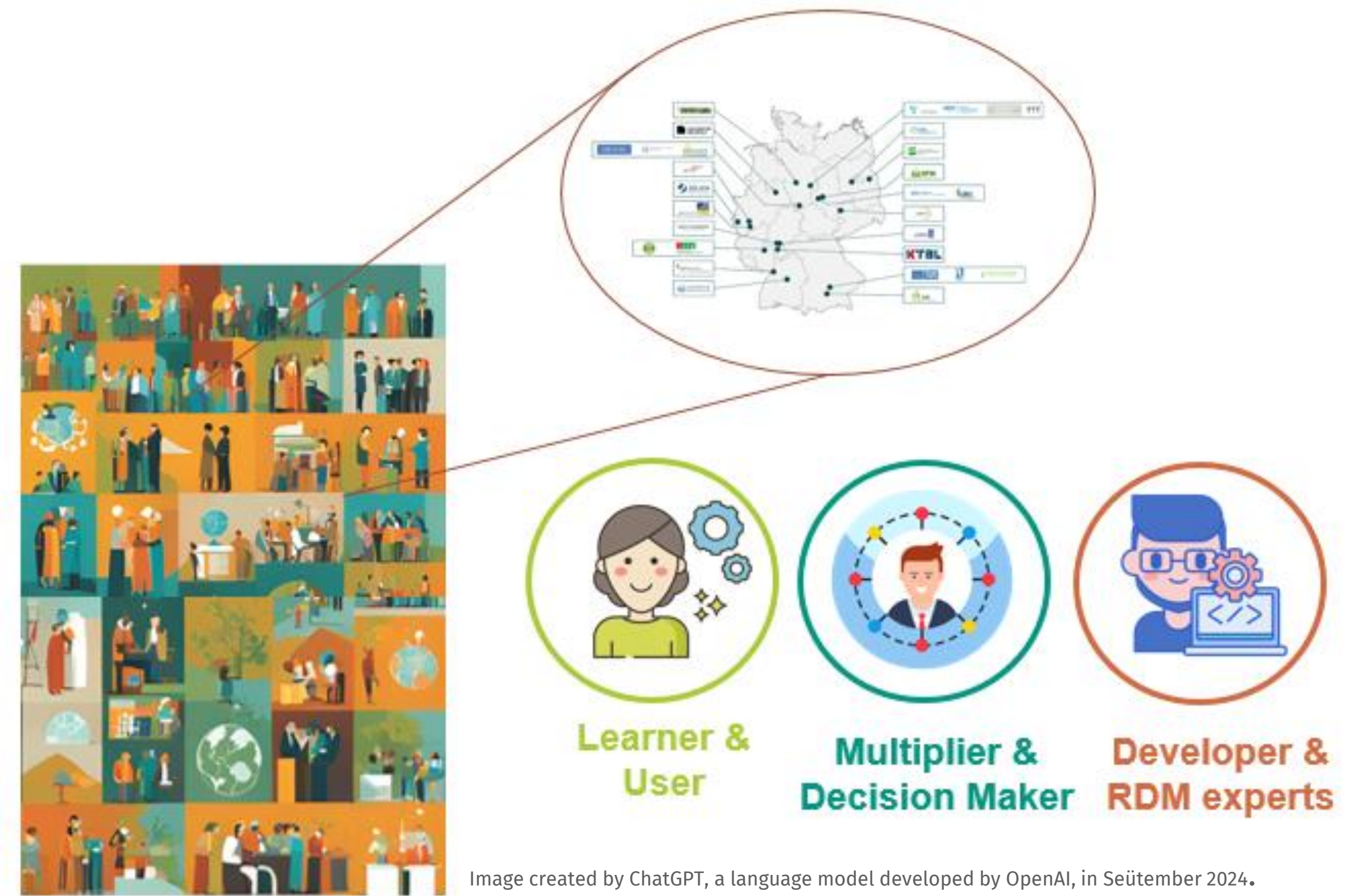


Image created by ChatGPT, a language model developed by OpenAI, in September 2024

A fundamental component of community-driven development is a clear understanding of key stakeholders and core target groups, along with their motivations.



→ Academic teaching collaboration	→ Individual learning support
• Train-the-Trainer	• OER
• Teaching concepts	• Self-learning units
• Teaching material	• RDM module “Agrosystem”

Diversifying and scaling training opportunities is crucial to drive cultural change for a FAIR data future in agrosystem research!



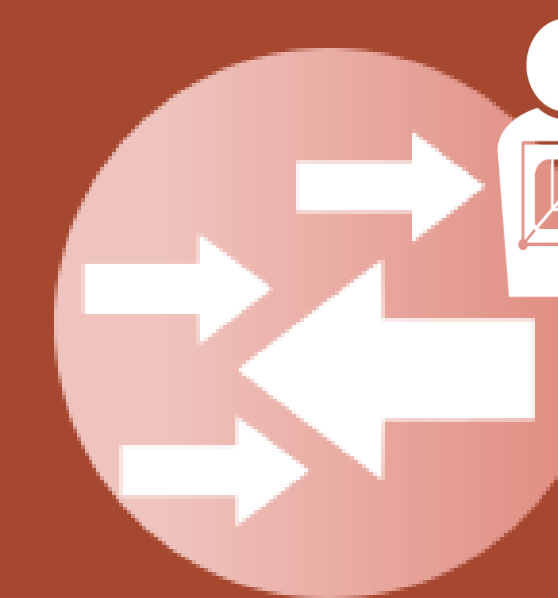
- RDM Support
- Consulting for institutions, initiatives, projects
- Collaboration within the scope of FAIRagro
- Develop/ promote/share/link knowledge, information, resources, etc.

Acts as a listening ear for the needs of the community.
Serves as a gateway to foster active collaboration.

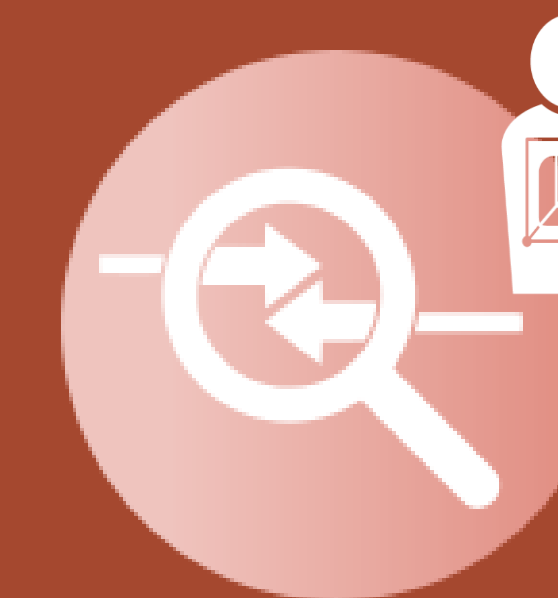


- Meeting international requirements
- Moving FAIR to the next level
- Ensuring interoperability

Establishing a communication network is essential for fostering proximity to the community, understanding their needs, and building trust.



Acting as a voice and an amplifier for specific stakeholder and target groups!



Ensuring effective flow of relevant information, leveraging expertise, and facilitating active contributions.



- Cool content
- Social media activities
- Networking events
- Fun 😊

Cultural change requires investment in people!!! Fostering a sense of ownership and creating commitment across the community is crucial for the success of community-driven developments.



Consultation partnership



Tech(nical) partnership

Training partnership



Data partnership

Facilitate active collaboration through clear structures and processes, inviting meaningful partnerships with the community at multiple levels (individual, project, and institutional).

Tailored services
& infrastructures



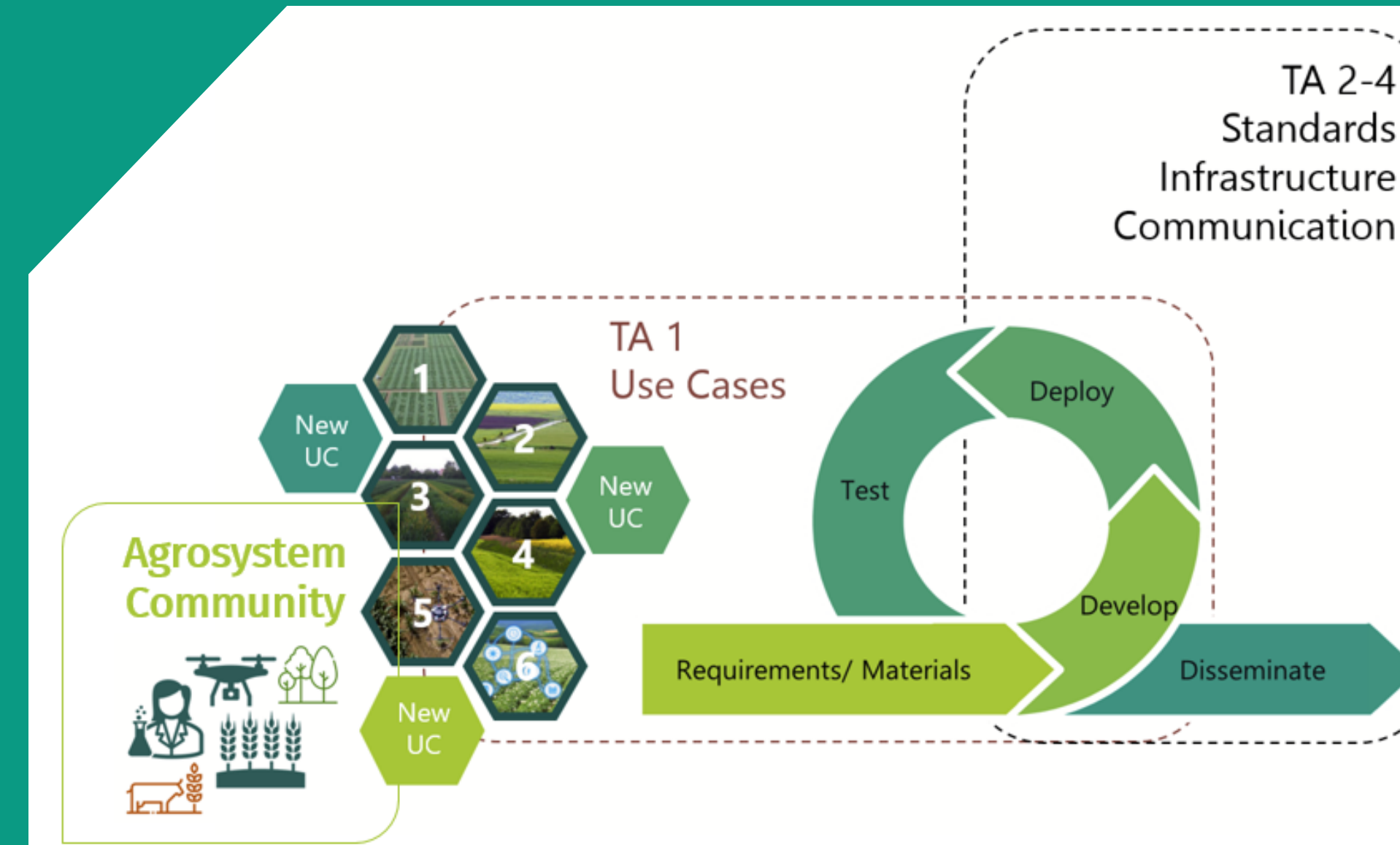
Image created by ChatGPT, a language model developed by OpenAI, in September 2023.

Challenges & needs from the community



Image created by
ChatGPT, a
language model
developed by
OpenAI, in
September 2024

Use Cases



Clear and
concrete RDM
needs & requirements

Applying,
implementing
& scaling
FAIR practices